

Service Parts Manual for EG6062KTA1

EG6062KTA1 备件手册



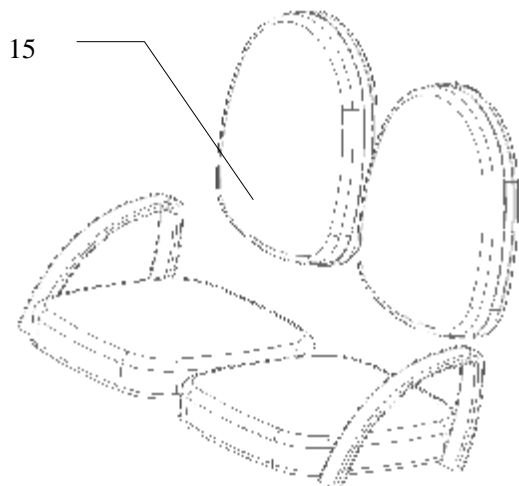
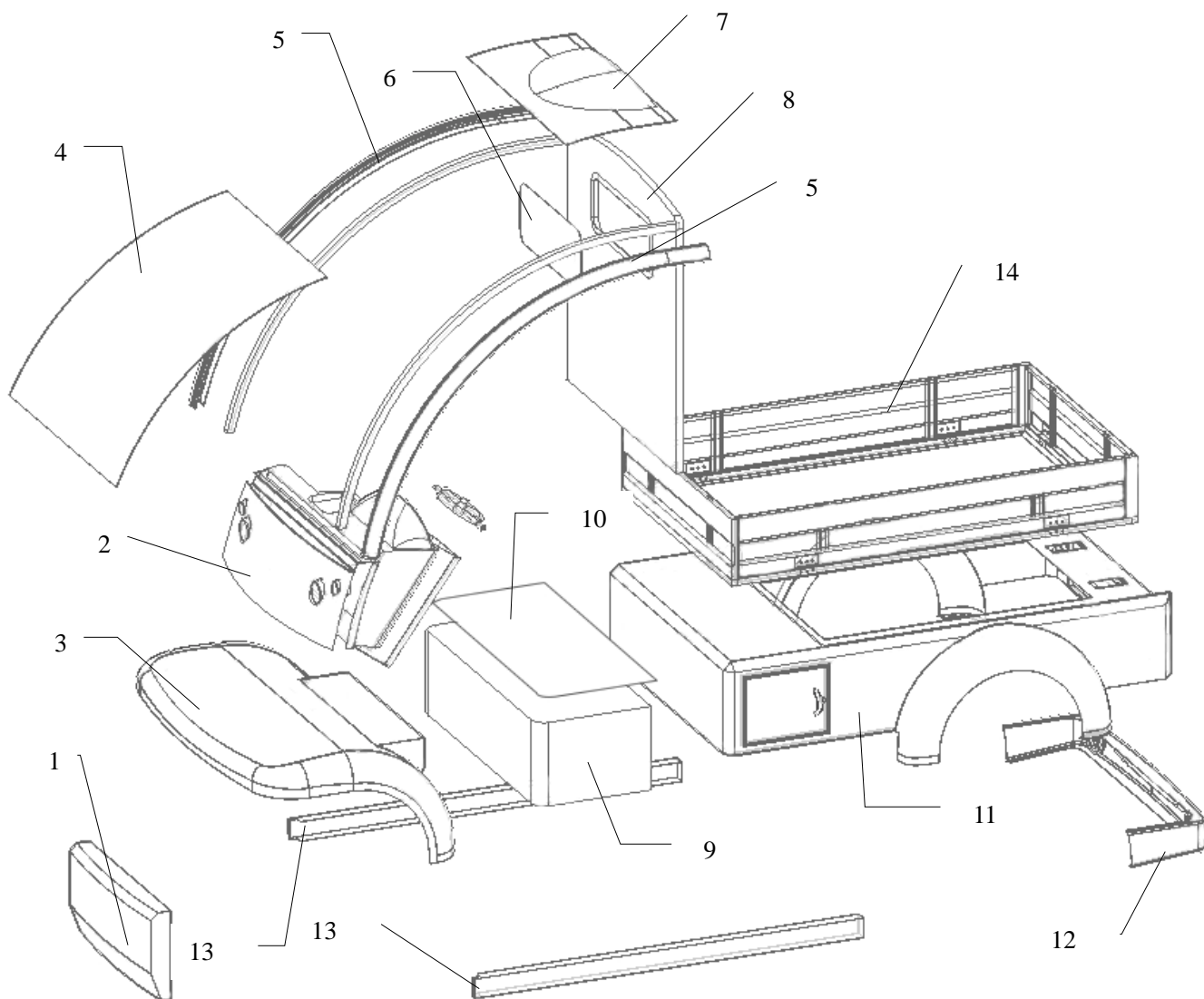
苏州益高电动车辆制造有限公司

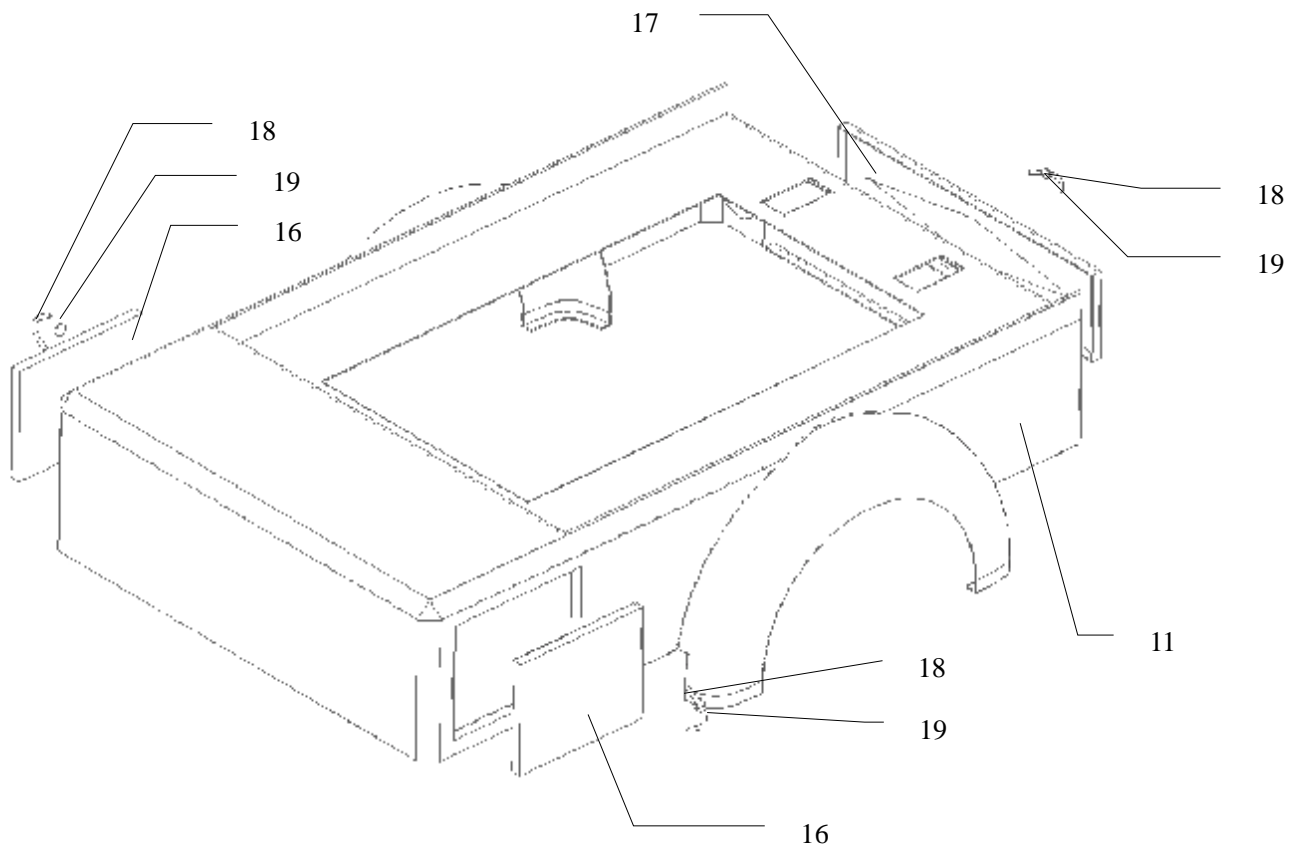
Suzhou Eagle Electric Vehicle Manufacturing Co., Ltd.

Index

1-1 Body Parts (车身件)	3
1-2 Side Rear View Mirror (侧后视镜)	5
1-3 Inner Rear View Mirror (内后视镜)	6
2-1 Frame Assembly, Floor (车架总成, 地板)	7
3-1 Steering Column Assembly (转向轴总成)	8
3-2 Redirector Assembly (转向器总成)	9
3-3 Steering Wheel Assembly (方向盘总成)	11
4-1 Brake Pedal & Parking Brake Pedal (制动踏板及驻车踏板)	12
4-2 Master Cylinder and Brake Pipe (制动总泵及制动管路)	13
4-3 Front Brake Assembly (前轮制动器总成)	15
4-4 Rear Brake Assembly (后轮制动器总成)	17
4-5 Parking Brake System (驻车制动操纵)	19
5-1 Front Shock Absorber (前减震器)	20
5-2 Front Suspension Arm (前悬架导向机构)	22
5-3 Rear Suspension (后悬架总成)	24
6-1 Half Shaft (半轴)	26
6-2 Axle House (桥壳)	27
6-3 Retarder Assembly (主减速器总成)	28
6-4 Differential Assembly (差速器总成)	29
7-1 Wheel and Tyre (车轮)	31
8-1 Motor Assembly (电机总成)	32
9-1 Turn Signal light, Headlight (前转向灯、前大灯)	34
9-2 Alarm Lamp, Electric Siren (警灯总成, 警报器)	35
9-3 Meter, Start key (仪表, 开关)	36
9-4 Radio and CD Player (收放机和 CD 播放器)	38
9-5 Windshield Wiper Assembly (雨刮总成)	39
9-6 Accelerator Assembly, DC Converter (加速器总成, DC 转换器)	41
9-7 Other Electric Equipments (其他电器设备)	42
9-8 Electronic Controller Assembly (电控总成)	44
Electric Controller 1268 Assembly (1268 电控总成)	44
Electric Controller 1204 (1204 控制器)	46
9-9 Batteries and Connect Wire (电池及连线)	47
9-10 Charger (充电器)	49
10-1 Hydraulic lift (液压举升)	51
11-1 Heater component (暖风机机体)	52
11-2 Heater shell (暖风机罩形外壳)	54
11-3 Heater installation (暖风机安装)	55
12-1 (封闭件 Hard door)	57

1-1Body Parts (车身件)

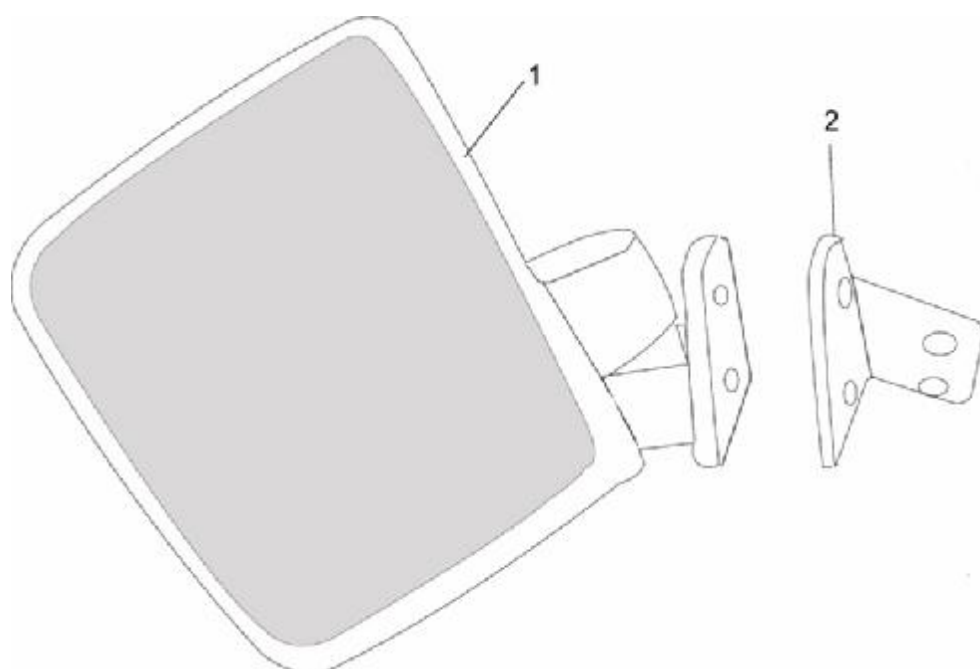




1-1 Body Parts (车身体)

Item	Part number	Description	名称	Qty/car	Remark
1	5307110-005	Front bumper	前保险杠	1	
2	6042-5205010	Dashboard	仪表台	1	
3	5302010-024	Front body	前底座	1	
4	5303010-007	Windshield	前挡玻璃	1	
5	6020X-5601080	Roof&windshield frame	顶棚包层柱	2	
6		Rear windshield	后挡玻璃	1	
7	6020X-5602100	Top fiberglass roof	顶蓬玻璃钢	1	
8	6020X-5601000	Top frame assembly	顶蓬骨架焊接总成	1	
9	6020X-5102020	Seat pot	电池仓	1	
10	6042-5102021	Seat pot covering board	电池仓上封板	1	
11	6020X-5102030	Rear body	后底座	1	
12	5406100-002	Rear bumper	后保险杠	1	
13	6020X-5108002	Side trim	侧护板	2	
14		Cargo bed	货箱	1	
15	6042-6503010	Seats assembly	座椅	2	
16		Side trunk door	后底座侧门板	2	
17		Rear trunk door	后底座后门板	1	
18		handle	把手	3	
19		lock	锁	3	

1-2 Side Rear View Mirror (侧后视镜)



1-2 Side Rear View Mirror (侧后视镜)

Item	New Part No.	Description	名称	Qty/car	Remark
1	9002100-009	Side rear view mirror	新式左右后视镜	2	Eudipleural
2	6042-9002011	Side mirror bracket	后视镜支架	2	Eudipleural

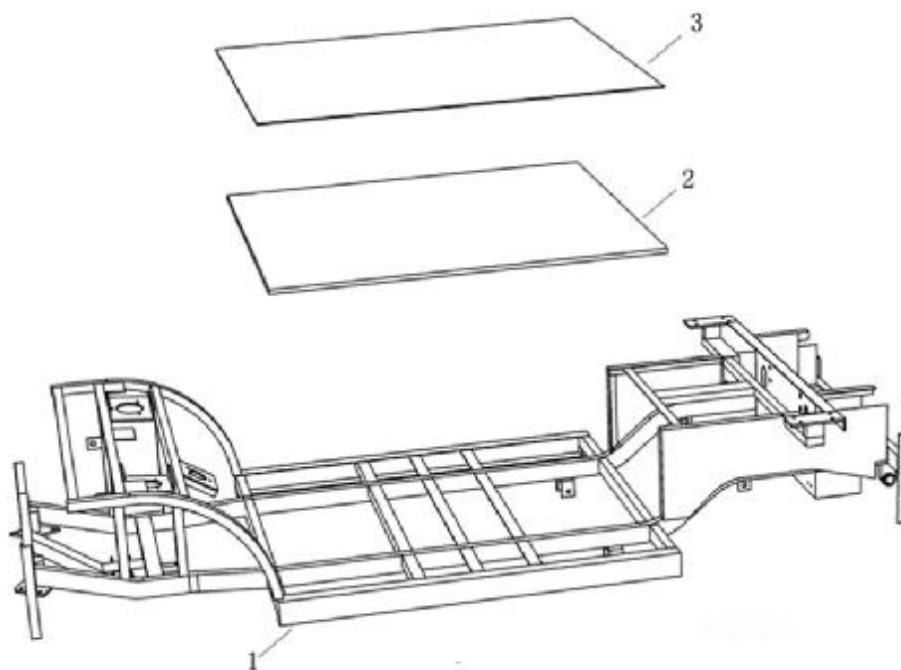
1-3 Inner Rear View Mirror (内后视镜)



1-3 Inner Rear View Mirror (内后视镜)

Item	New Part No.	Description	名称	Qty/car	Remark
1	9001100-001	Inner rearview mirror	6083 内视镜	1	
2	9001010-001	Inner rearview mirror holder	6083 内视镜座	1	

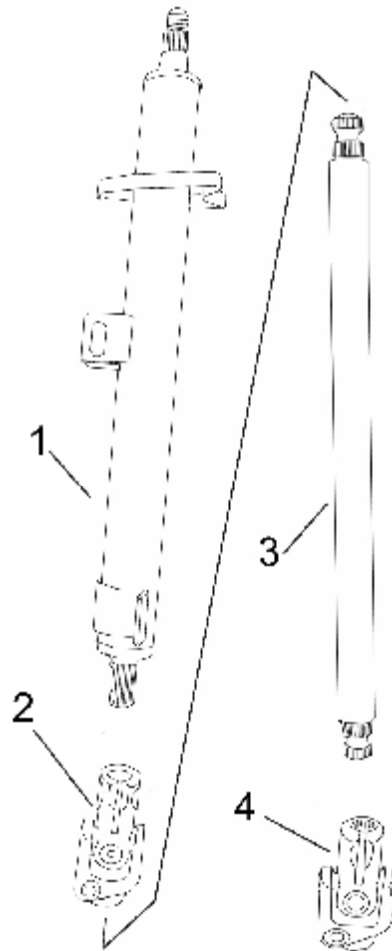
2-1 Frame Assembly, Floor (车架总成, 地板)



2-1 Frame Assembly, Floor (车架总成, 地板)

Item	New Part No.	Description	名称	Qty/car	Remark
1	5101000-021	Frame assembly	6062 车架	1	
2	5020-5105001	Bamboo floor	6062 竹地板	1	
3		Floor mat	6062 地板革	1	cut in spot

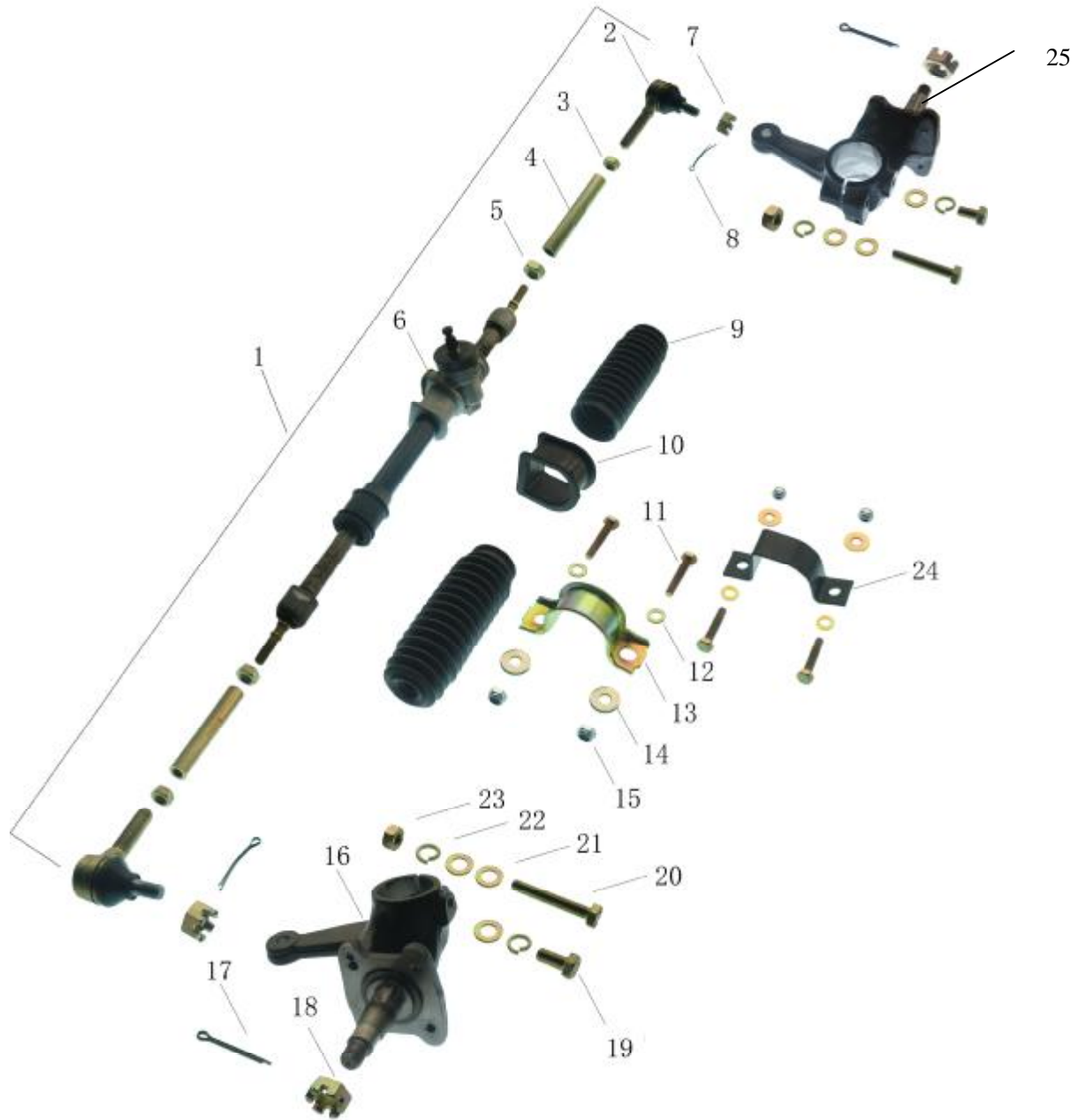
3-1 Steering Column Assembly (转向轴总成)



3-1 Steering Column Assembly (转向轴总成)

Item	New Part No.	Description	名称	Qty/car	Remark
1	2705100-007	Steering column assembly	方向轴管总成	1	
2	2704100-001	Gimbal	万向节	1	
3	2704300-007	Connecting rod	连接杆	1	
4	2704100-022	Gimbal	6043 万向节	1	

3-2 Redirector Assembly (转向器总成)



3-2 Redirector Assembly (转向器总成)

Item	New Part No.	Description	名称	Qty/car	Remark
1	2701100-007	Redirector assembly	方向机总成	1	
2	2701220-008	Ball connector	球头	2	
3	Q340B14	Nut M14	1 型六角螺母 M14	2	
4	LT3401070BM2-1	Rod	连杆	2	
5	Q340B12	Nut M12	1 型六角螺母 M12	2	
6	LT3401020BM2	Steering gear housing	转向器壳体组件	1	
7	Q381B12	Slotted nut M12	1 型六角开槽螺母 —细牙 M12	2	
8	Q5000220	Split pin $\Phi 2.5 \times 20$	开口销 $\Phi 2.5 \times 20$	2	
9	2701111-008	Dustproof cover	防尘罩	2	
10		Left bracket bush	左托架衬套	1	
11	Q150B0840	Bolt M8 \times 40	六角头螺栓 M8 \times 40	4	
12	Q40108	Gasket M8	平垫圈 M8	4	
13		Right bracket of redirector	转向器右支架	1	
14	Q40208	Big gasket M8	大垫圈 M8	4	
15	Q32608	Self-lock nut M8	2 型非金属嵌件六角 琐紧螺母 M8	4	
16	2302100-007	Left knuckle	左转向节	2	
17	Q5000440	Split pin $\Phi 4 \times 40$	开口销 $\Phi 4 \times 40$	2	
18	Q387B16	Slotted nut M16	六角开槽薄螺母 —细牙 M16	2	
19	Q150B1020	Bolt M10 \times 20	六角头螺栓 M10 \times 20	2	
20	Q150B1060	Bolt M10 \times 60	六角头螺栓 M10 \times 60	2	
21	Q40110	Gasket M10	平垫圈 M10	6	
22	Q40310	Gasket spring M10	弹垫 M10	4	
23	Q340B10	Nut M10	1 型六角螺母 M10	2	
24		Left bracket of redirector	转向器左支架	1	
25	2302200-007	Right knuckle	右转向节	1	

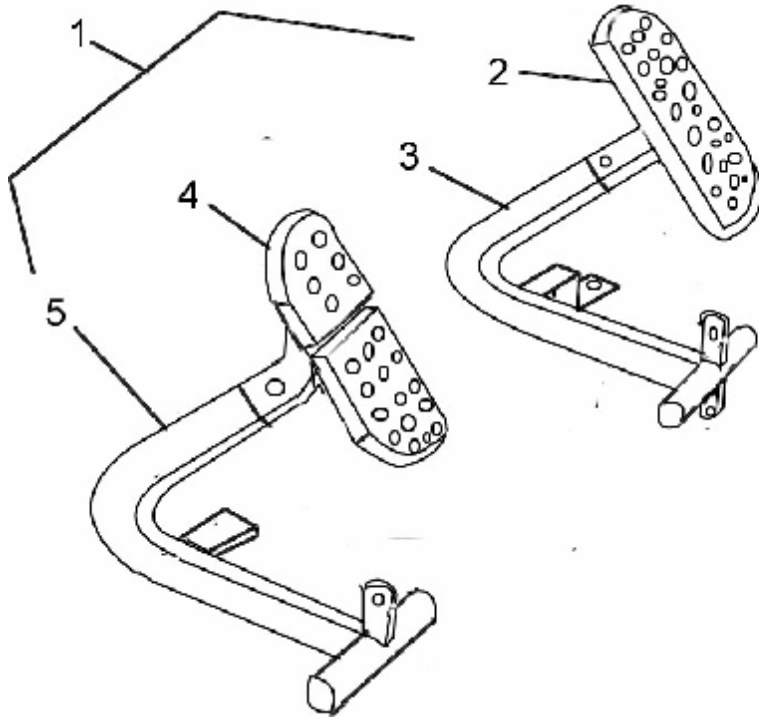
3-3 Steering Wheel Assembly (方向盘总成)



3-3 Steering Wheel Assembly (方向盘总成)

Item	New Part No.	Description	名称	Qty/car	Remark
1	2702100-005	Steering wheel Assembly	方向盘总成	1	timber
2	6042-2702121	Steering horn cap	方向盘盖	1	

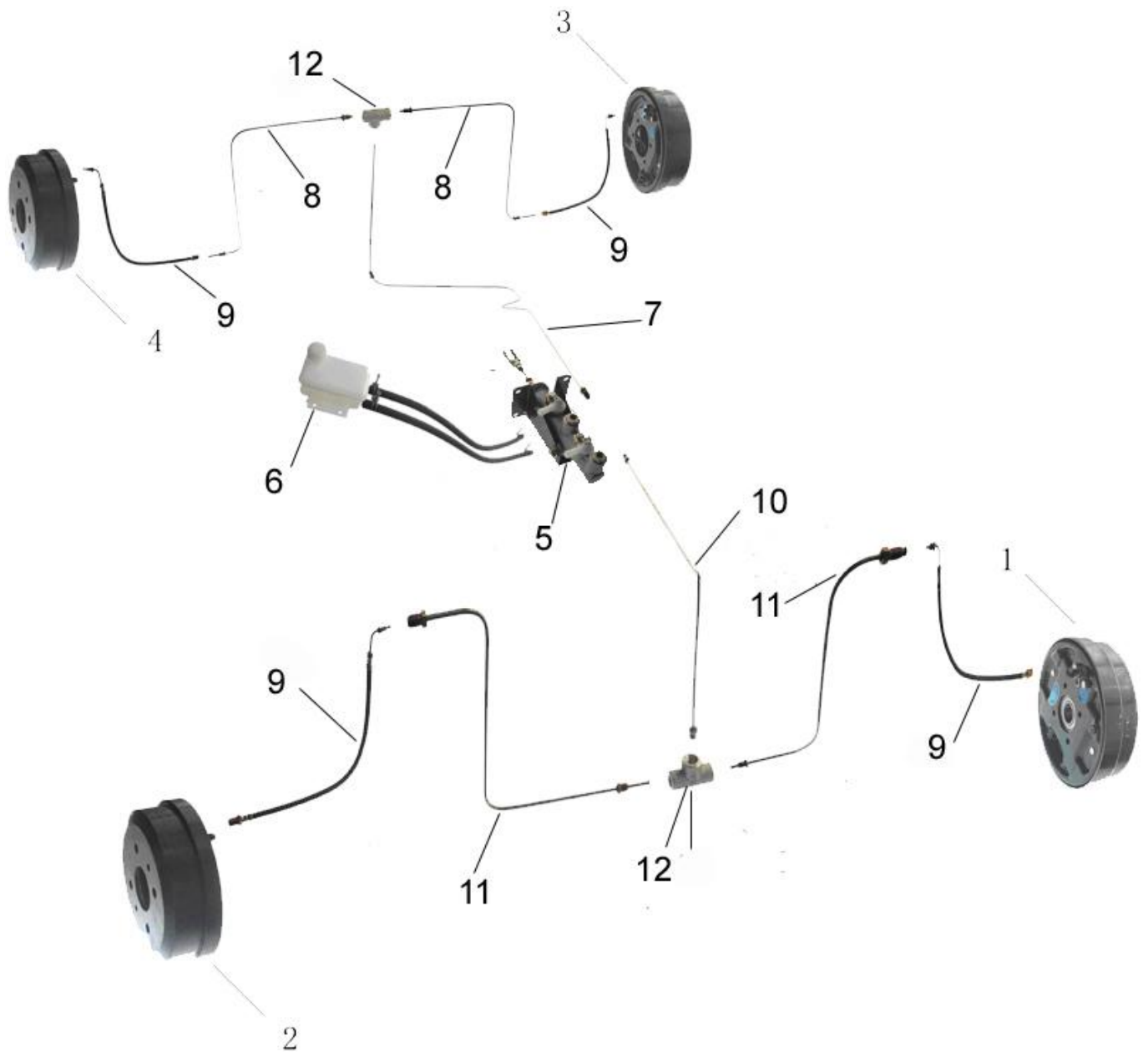
4-1 Brake Pedal & Parking Brake Pedal (制动踏板及驻车踏板)



4-1 Brake Pedal & Parking Brake Pedal (制动踏板及驻车踏板)

Item	New Part No.	Description	名称	Qty/car	Remark
1	2803112-024	Brake pedal (include service brake and parking brake) assembly	踏板臂成套件	1	include item 2-5
2		Service brake pedal	行车制动踏板	1	
3		Service brake bracket	行车制动臂	1	
4		Parking brake pedal	驻车制动踏板	1	
5		Parking brake pedal	驻车制动臂	1	

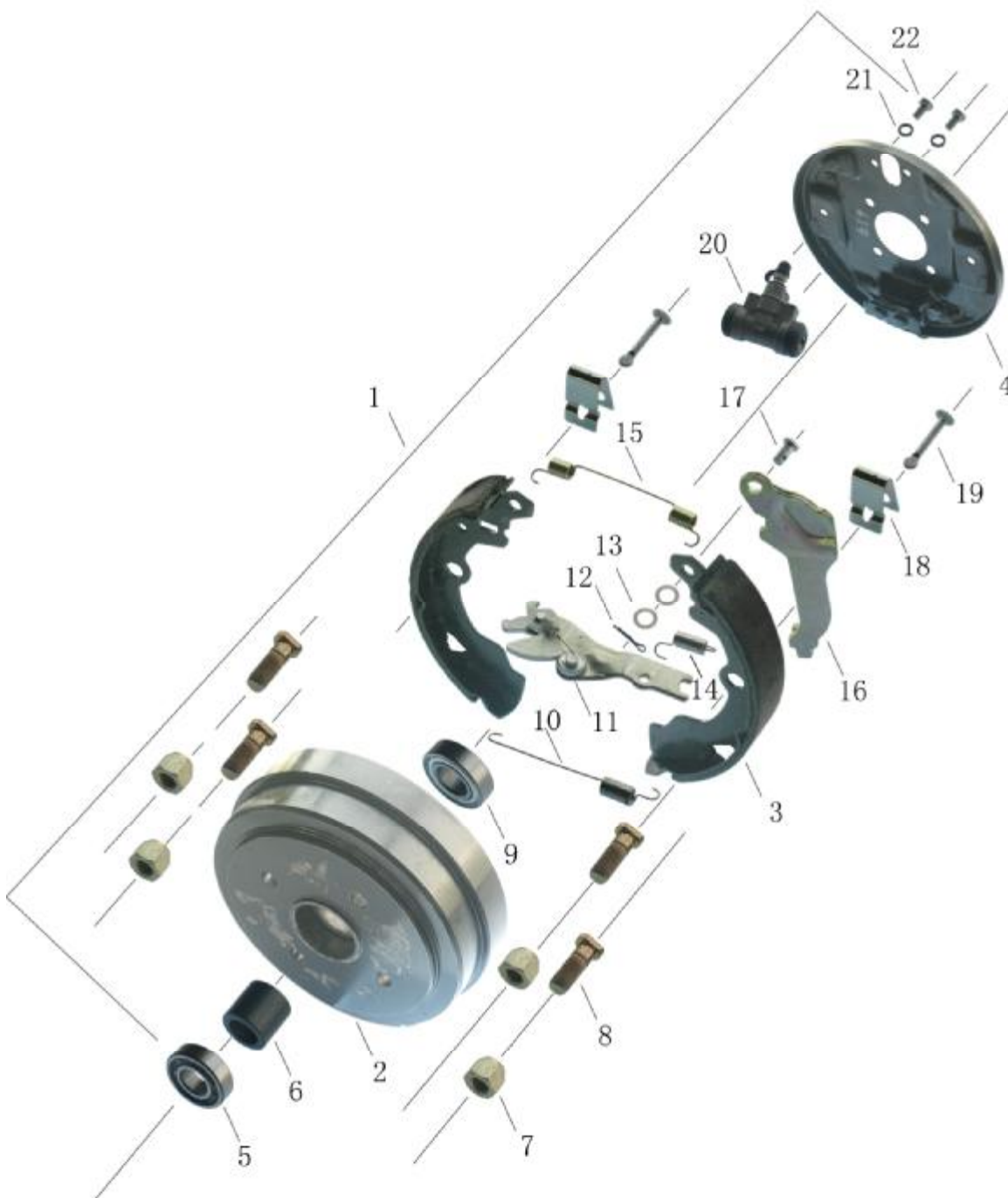
4-2 Master Cylinder and Brake Pipe (制动总泵及制动管路)



4-2 Master Cylinder and Brake Pipe (制动总泵及制动管路)

Item	New Part No.	Description	名称	Qty/car	Remark
1	2801100-007	Front brake assembly, LH	左前轮制动器总成	1	
2	2801200-007	Front brake assembly, RH	右前轮制动器总成	1	
3	2802100-006	Rear brake assembly, LH	左后轮制动器总成	1	
4	2802200-006	Rear brake assembly, RH	右后轮制动器总成	1	
5	2804100-022	Master cylinder	制动总泵带推杆总成	1	
6	2805040-002	Reservoir Assembly	制动储液灌总成	1	
7	2805020-008	Brake pipe 1800mm	油管 1800mm	2	1800mm
8	2805020-004	Brake pipe 600mm	油管 600mm	2	600mm
9	2805030-008	Brake cable 600mm	软管 600mm	4	600mm
10	2805020-011	Brake pipe 1880mm	油管 1880mm	1	1880mm
11	2805020-016	Brake pipe 500mm	油管 500mm	2	500mm
12	2805014-002	Tee connector	三通	2	

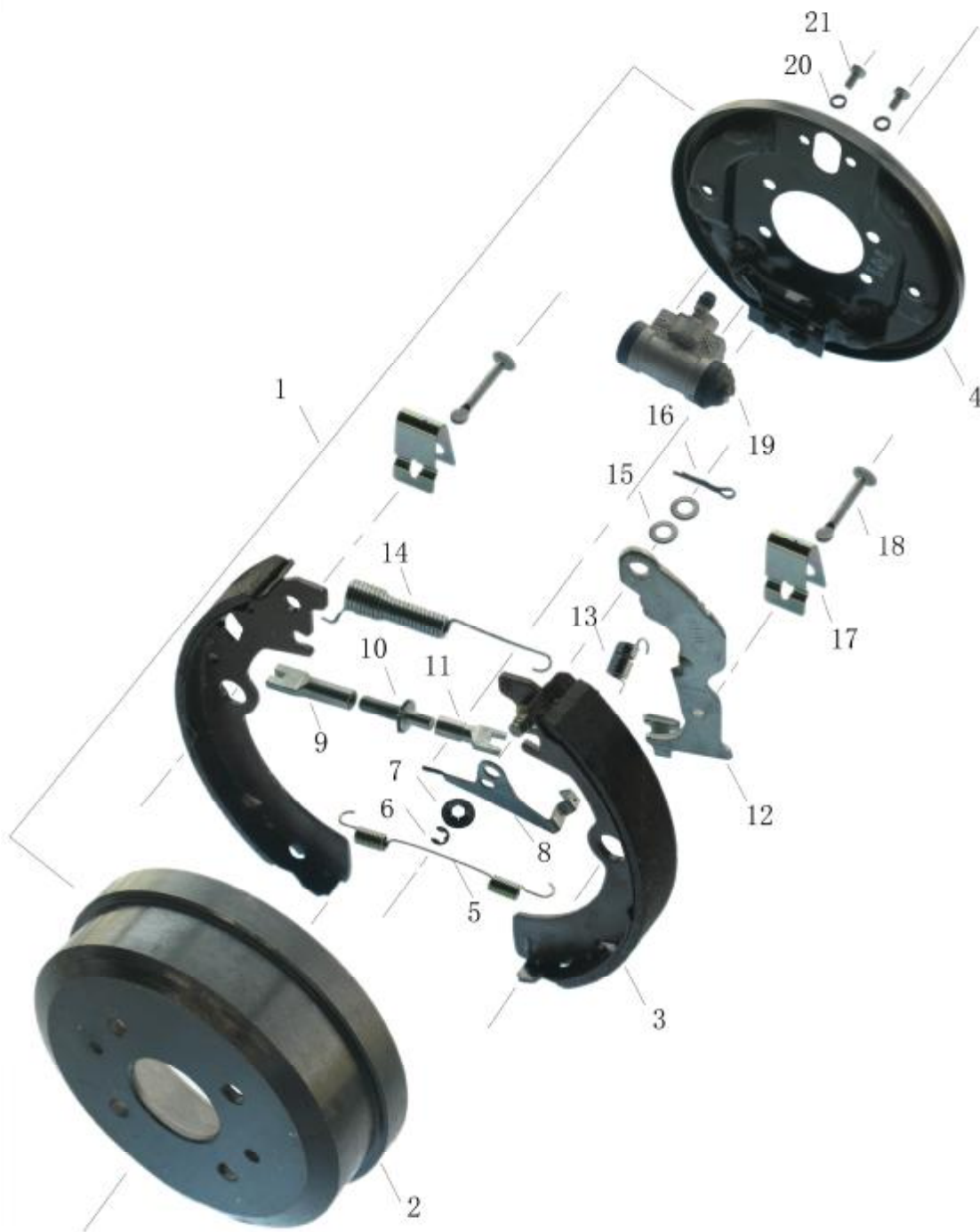
4-3 Front Brake Assembly (前轮制动器总成)



4-3 Front Brake Assembly (前轮制动器总成)

Item	New Part No.	Description	名称	Qty/car	Remark
1	2801100-007	Front brake assembly LH	前轮制动器总成(左)	1	
	2801200-007	Front brake assembly RH	前轮制动器总成(右)	1	
2	2801310-007	Front brake drum	前制动鼓	2	
3	2801110-007	Brake shoe assembly	6042 前制动蹄片	4	
4		Motherboard assembly	底板总成	2	
5	6204	Outer bearing	外轴承	2	
6		bush	间隔衬套	2	
7		Wheel nut	轮胎螺母	8	
8		Wheel bolt	轮胎螺栓	8	
9	6205	Inner bearing	内轴承	2	
10		Spring	拉紧弹簧	2	
11		Shoe gap self adjustment pusher	蹄隙自调推板	2	
12		Split pin	开口销	2	
13		Gasket	平垫圈	4	
14		Return spring	驻车制动杠杆复位弹簧	2	
15		Return spring	复位弹簧	2	
16		Parking brake lever	驻车制动杠杆	2	
17		Parking brake shoe pin	驻车制动蹄销	2	
18		Brake shoe stationary spring	制动蹄固定弹簧片	4	
19		Hold-down pin	扁头钉	4	
20	2801130-007	Front wheel cylinder	前制动器分泵总成	2	
21	Q40306	Gasket spring M6	弹垫 M6	4	
22	Q150B0610	Bolt Hex-head castle M6×10	六角头螺栓 M6×10	4	

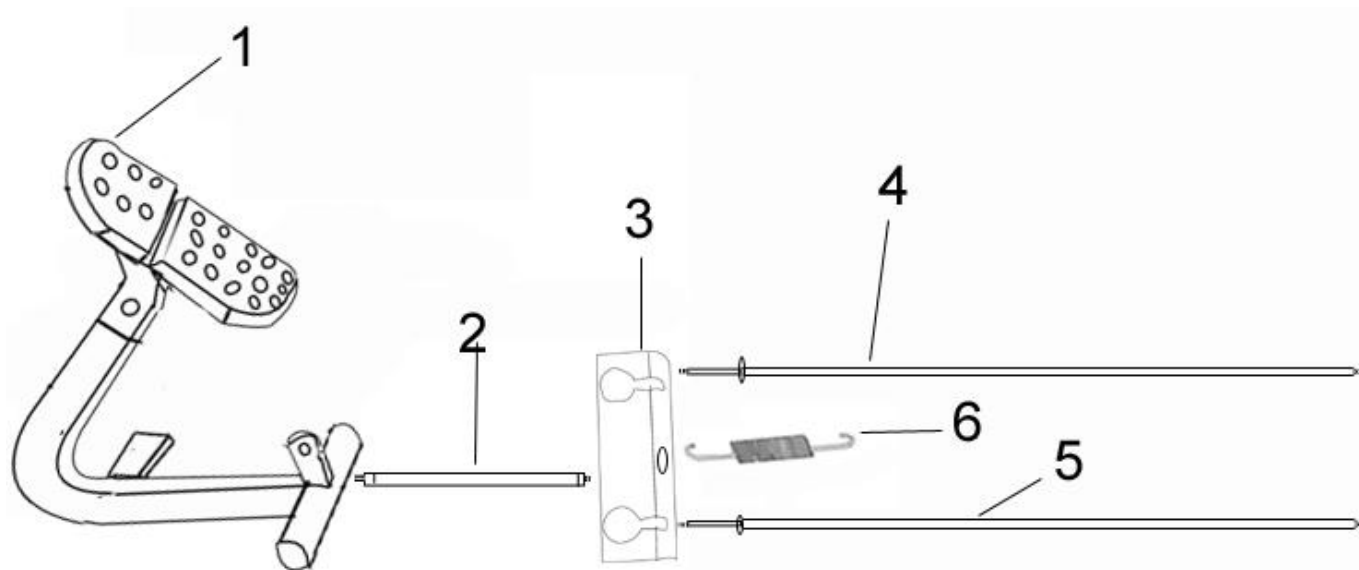
4-4 Rear Brake Assembly (后轮制动器总成)



4-4 Rear Brake Assembly (后轮制动器总成)

Item	New Part No.	Description	名称	Qty/car	Remark
1	2802100-006	Rear brake assembly LH	后轮制动器总成 (左)	1	
	2802200-006	Rear brake assembly RH	后轮制动器总成 (右)	1	
2	2802310-006	Rear brake drum	后制动鼓	2	
3	2802110-006	Brake shoe assembly	6042 制动蹄片	4	
4		Motherboard assembly	底板总成	2	
5		Spring	拉紧弹簧	2	
6		Split shield ring	开口挡圈	2	
7		Thrust washer	止推垫圈	2	
8		Clearance plate	调隙拨板	2	
9		Shoe gap self adjustment rod	后轮制动间隙自动调整器连杆	1	
10		Ratchet wheel	棘轮	2	
11		Shoe gap self adjustment rod	后轮制动间隙自动调整器连杆	2	
12		Parking brake lever	驻车制动杠杆	2	
13		Return spring	驻车制动杠杆复位弹簧	2	
14		Brake shoe return spring	蹄片复位弹簧	2	
15	Q401	Gasket	平垫圈	4	
16		Split pin	开口销	2	
17		Brake shoe stationary spring	制动蹄固定弹簧片	4	
18		Hold-down pin	扁头钉	4	
19	2802130-009	Rear wheel cylinder	后制动器分泵总成	2	
20	Q40306	Gasket spring M6	弹垫 M6	4	
21	Q150B0610	Bolt Hex-head castle M6×10	六角头螺栓 M6×10	4	

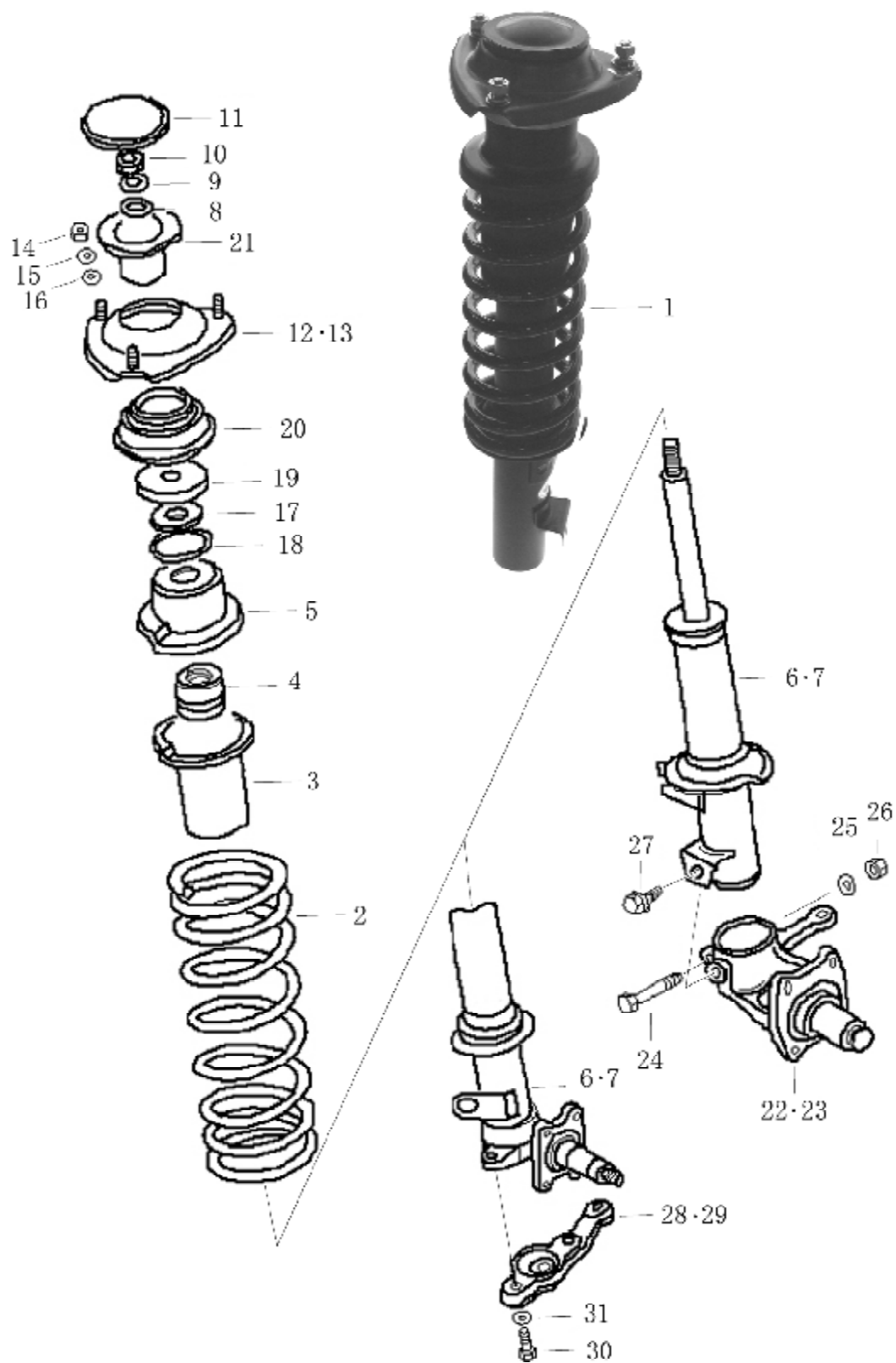
4-5 Parking Brake System (驻车制动操纵)



4-5 Parking Brake System (驻车制动操纵)

Item	New Part No.	Description	名称	Qty/car	Remark
1		Parking brake assembly	驻车踏板总成	1	
2		Connecting rod	连杆	1	
3		Parking tightwire connecting plate	驻车拉线连接块	1	
4	2807320-006	Right parking tightwire	右驻车钢索	1	
5	2807310-006	Left parking tightwire	左驻车钢索	1	
6		Parking brake return spring	驻车制动回位弹簧	1	

5-1 Front Shock Absorber (前减震器)



5-1 Front Shock Absorber (前减震器)

Item	New Part No.	Description	名称	Qty/car	Remark
1	2501100-007	Front shock absorber RH	右前减震器总成	1	
	2501200-007	Front shock absorber LH	左前减震器总成	1	
2		Front coil spring	前悬架螺旋弹簧		
3		Front coil spring seat	前悬架弹簧座	2	
4		Spring bumper	橡胶缓冲轴套	2	
5		Upper spring seat	前悬架弹簧上座	2	
6		Strut assembly, RH	右前减震器	1	
7		Strut assembly, LH	左前减震器	1	
8	Q401	Washer	垫圈	2	
9	Q403	Spring washer	弹簧垫圈	2	
10		Hex-head nut	六角自锁螺母	2	
11		Front strut support cap	前减震器防尘盖	2	
12		Front strut support, RH	右前悬架上安装座 组件	1	
13		Front strut support, LH	左前悬架上安装座 组件	1	
14		Nut	前缓冲器螺母	6	
15	Q403	Spring washer	弹簧垫圈	6	
16	Q401	Washer	垫圈	6	
17		Strut thrust bearing	摩擦衬套	2	
18		Dust stal strut bearing	防尘胶套	2	
19		Bearing seat	上支承座下盖	2	
20		Front strut rubber support	橡胶缓冲块	2	
21		Thrust rebound Stopper	前减震器锁紧套	2	
22	2302200-007	Steering knuckle, RH	右转向节	1	
23	2302100-007	Steering knuckle, LH	左转向节	1	
24		Steering knuckle bolt	转向节螺栓	2	
25		Steering knuckle spring washer	转向节弹簧垫圈	2	
26		Steering knuckle nut	转向节螺母	2	
27		Steering knuckle nut	转向节固定螺母	2	
28		Steering knuckle arm, RH	右转向节臂	1	
29		Steering knuckle arm, LH	左转向节臂	1	
30	Q150B	Hex-head bolt	小六角头螺栓	4	
31	Q403	Spring washer	弹簧垫圈	4	

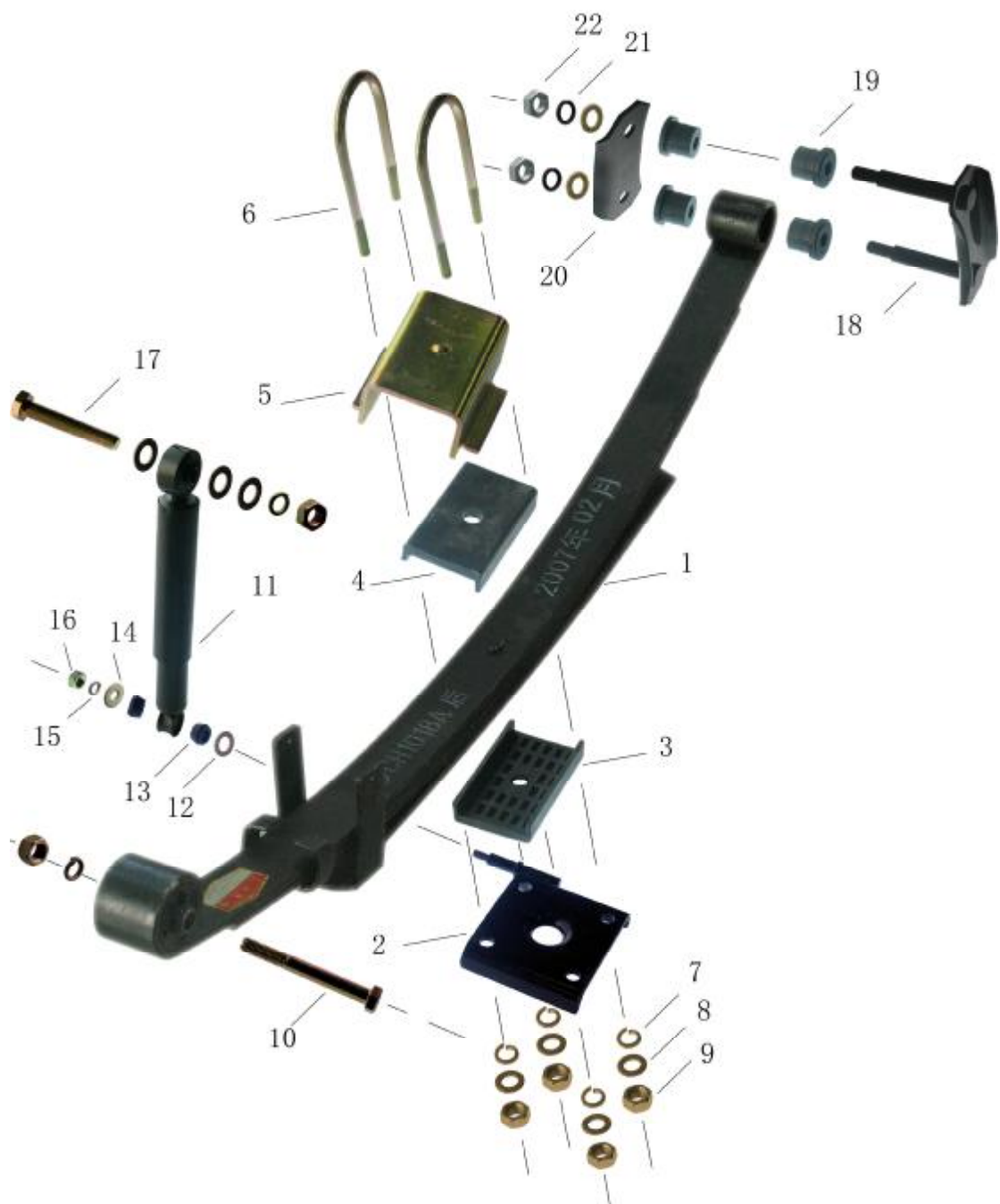
5-2 Front Suspension Arm (前悬架导向机构)



5-2 Front Suspension Arm (前悬架导向机构)

Item	New Part No.	Description	名称	Qty/car	Remark
1	2503200-014	Front suspension arm assembly	前悬臂总成	2	
2	2505100-022	Tension rod assembly	前悬架斜拉杆组件	2	
3		Tension rod bush	斜拉杆轴衬套	4	
4		Tension rod plank	斜拉杆支架组件	2	
5		Tension rod washer	斜拉杆前垫圈	2	
6	Q330	Tension rod nut	斜拉杆锁紧螺母	2	
7	Q150B	Tension rod plank Bolt	斜拉杆支架螺栓	8	
8	Q401	Tension rod plank gasket	斜拉杆支架平垫	8	
9	Q403	Tension rod plank spring washer	斜拉杆支架弹簧垫圈	8	
10	Q353B	Tension rod plank nut	斜拉杆支架螺母	8	
11	Q150B1080	Bolt M10×80	螺栓 M10×80	2	
12	Q254	Bolt	十字槽沉头螺钉	8	

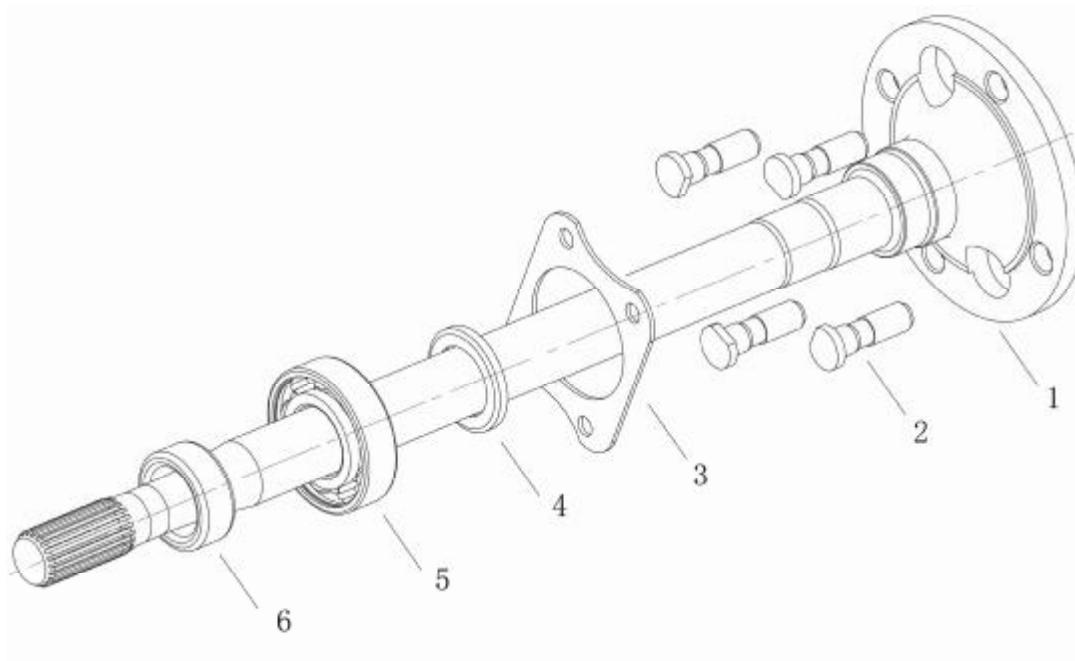
5-3 Rear Suspension (后悬架总成)



5-3 Rear Suspension (后悬架总成)

Item	New Part No.	Description	名称	Qty/car	Remark
1	2508100-010	Rear leaf spring assembly	后板簧总成	2	
2	2509014-007	Leaf spring lower press plate RH	右后板簧下压板组件	1	
	2509013-007	Leaf spring lower press plate LH	左后板簧下压板组件	1	
3	2509016-007	Lower pad	板簧下垫	2	
4	2509015-007	Upper pad	板簧上垫	2	
5	2509012-007	Rear leaf spring clamp plate	后板簧上压板	2	
6	2509011-010	Leaf spring U bolt	板簧U型螺栓	4	
7	Q40312	Gasket Spring M12	弹垫 M12	10	
8	Q40112	Gasket M12	平垫 M12	18	
9	Q340B12	Nut M12	1 型六角螺母 M12	10	
10		Bolt M12×100	后板簧前吊耳螺栓 M12×100	2	
11	2504100-002	Rear shock absorber assembly	后减震器总成	2	Include 13
12	Q40108	Gasket M8	平垫 M8		
13		Bush	后减下吊环橡胶衬套	4	
14	Q40208	Big gasket M8	大垫圈 M8		
15	Q40308	Gasket spring M8	弹垫 M8		
16	Q340B08	Nut M8	1 型六角螺母 M8		
17	Q150B1060	Bolt M10×60	六角头螺栓 M10×60	2	
18	2509021-007	Shackle inner plate	吊耳内侧板	2	
19		Bush	后板簧后橡胶衬套	8	
20	2509022-007	Shackle outer plate	吊耳外侧板	2	
21	Q40310	Gasket spring M10	弹垫 M10	4	
22	Q340B10	Nut M10	1 型六角螺母 M10	4	

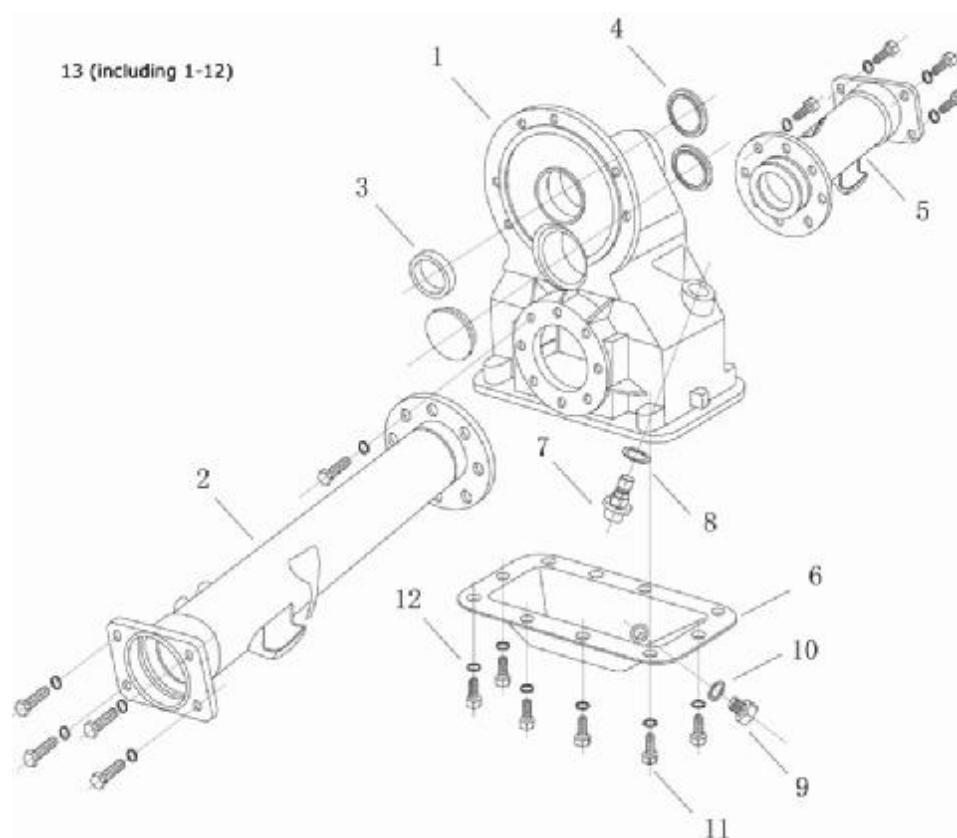
6-1 Half Shaft (半轴)



6-1 Half Shaft (半轴)

Item	New Part No.	Description	名称	Qty/car	Remark
1	2402100-020	Left half axle for 19' spline rear axle	左半轴	1	
	2402100-007	Left half axle for 18' spline rear axle	左半轴	1	
	2402200-020	Right half axle for 19' spline rear axle	右半轴	1	
	2402200-007	Right half axle for 18' spline rear axle	右半轴	1	
2	2600011-011	Tyre bolt M12×45	轮胎螺栓 M12×45	16	
3		Bearing capping	轴承压盖	2	
4	9010007-06206-001	Inner shield ring	内挡圈	2	
5	6206	Bearing 6206-Z	轴承 6206-Z	2	
6	9010007-06206-000	Outer shield ring	外挡圈	2	

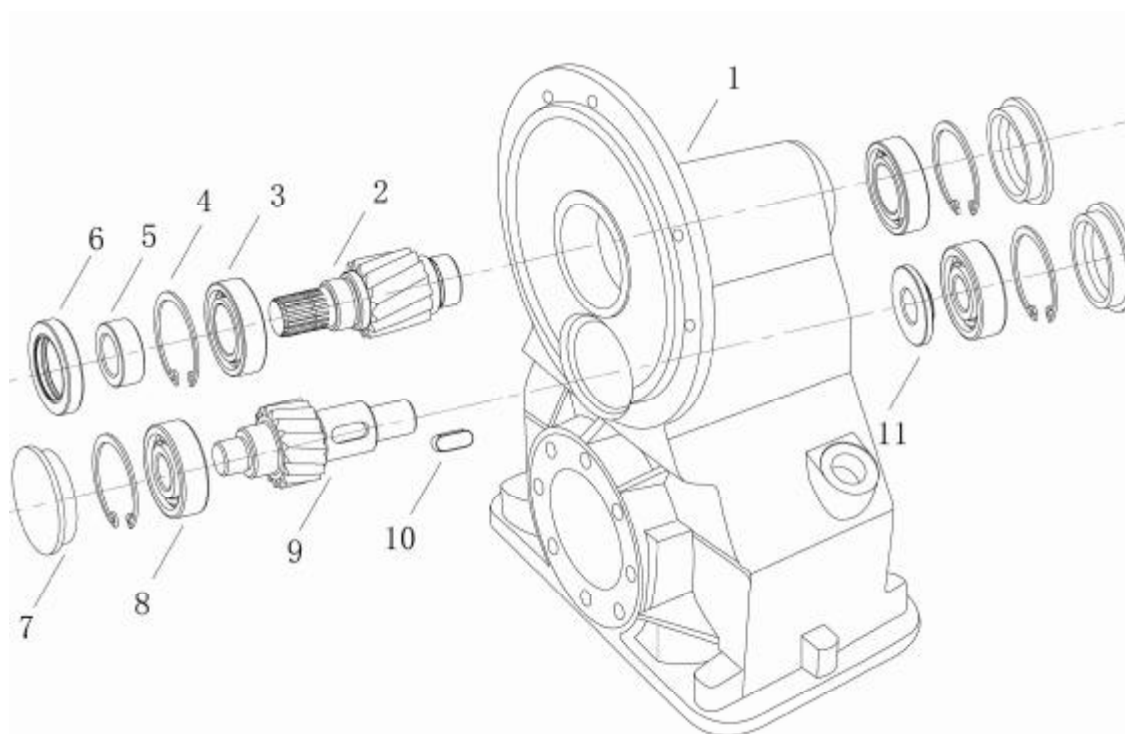
6-2 Axle House (桥壳)



6-2 Axle House (桥壳)

Item	New Part No.	Description	名称	Qty/car	Remark
1		Retarder case	减速度壳体	1	
2		Right half axle sleeving	右半轴管	1	
3		Oil seal (F) B32×47×8	油封 (F) B32×47×8	1	
4		Blanking adapter	堵头	3	
5		Left half axle sleeving	左半轴管	1	
6		oil pan	油底壳	1	
7		Filler bolt	注油螺栓	1	
8		Filler bolt gasket	注油螺栓垫	1	
9		Drain bolt	放油螺栓	1	
10		Drain bolt gasket	放油螺栓垫	1	
11	Q150B0825	Bolt M8×25	六角头螺栓 M8×25	34	
12	Q40308	Gasket spring M8	弹垫 M8	34	
13	YG8061B	Rear Axle Assembly (Square flange, 18 spline)	后桥总成 18 齿	1	
	2400000-007	Rear Axle Assembly (Round flange, 19 spline)	后桥总成 19 齿	1	

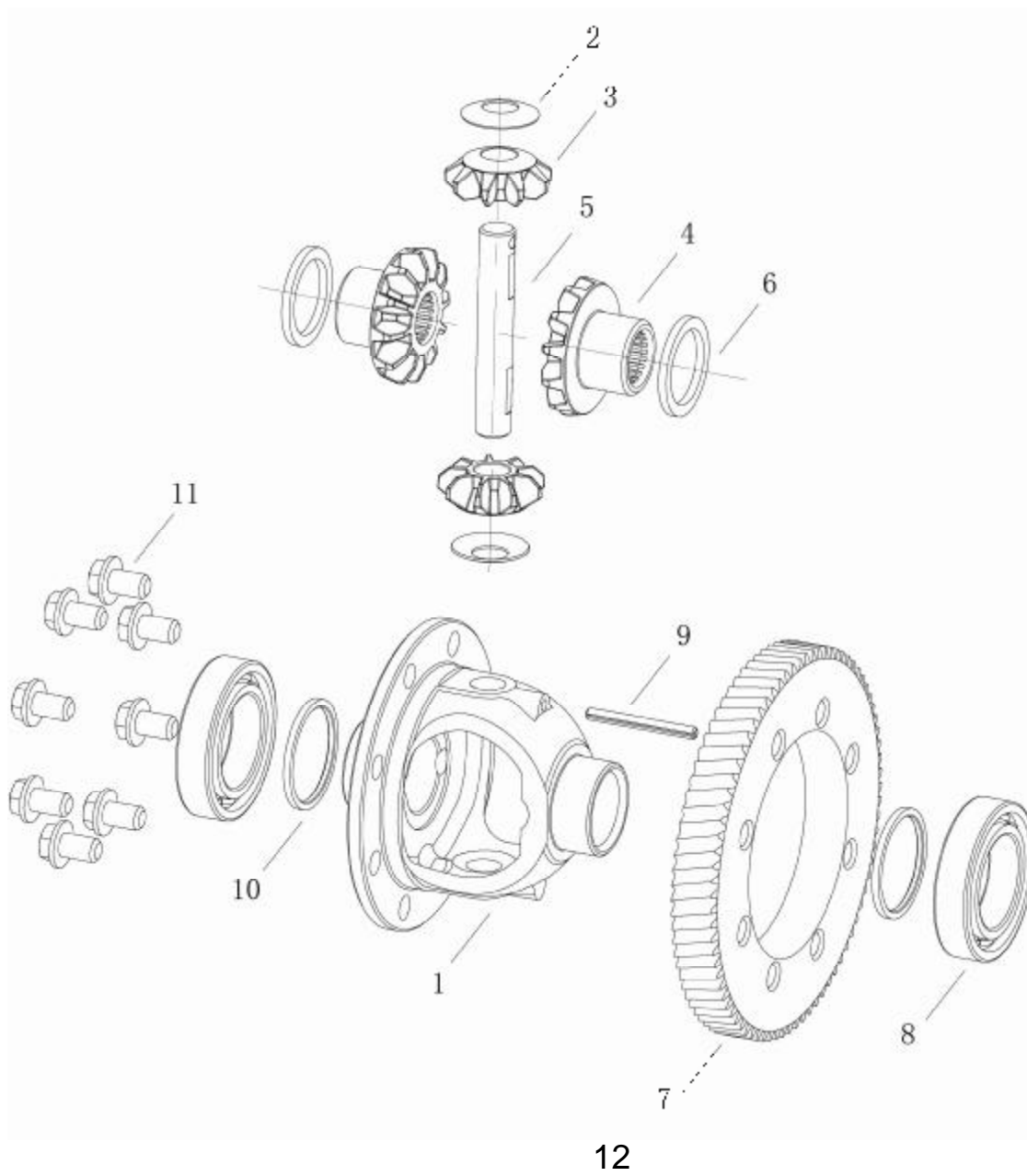
6-3 Retarder Assembly (主减速器总成)



6-3 Retarder Assembly (主减速器总成)

Item	New Part No.	Description	名称	Qty/car	Remark
1	2403100-007	Retarder Assembly (Square flange, 18 spline)	主减速器总成 (18 齿后桥)	1	
	YG8063-2403000	Retarder Assembly (Round flange, 19 spline)	主减速器总成 (19 齿后桥)	1	
2	2403112-010	Gear shaft I	齿轮轴 I	1	
3	9010006-6005RZ-000	Bearing 6005/P6	轴承 6005/P6	2	
4	2403011-EG2024-000	Shield ring 47	挡圈 47	4	
5	9010007-6005RZ-000	Bush	衬套	1	
6	2403302-EG2024-000	Oil seal (F) B32×47×8	油封 (F) B32×47×8	1	
7	2403006-EG2024-000	Blanking adapter	胶盖	3	
8	9010006-6303RS-000	Bearing 6303/P6	轴承 6303/P6	2	
9	2403114-010	Gear shaft II	齿轮轴 II	1	
10	8×20	Bond 8×20	键 8×20	1	
11	9010007-6303RS-000	Spacer	隔套	1	

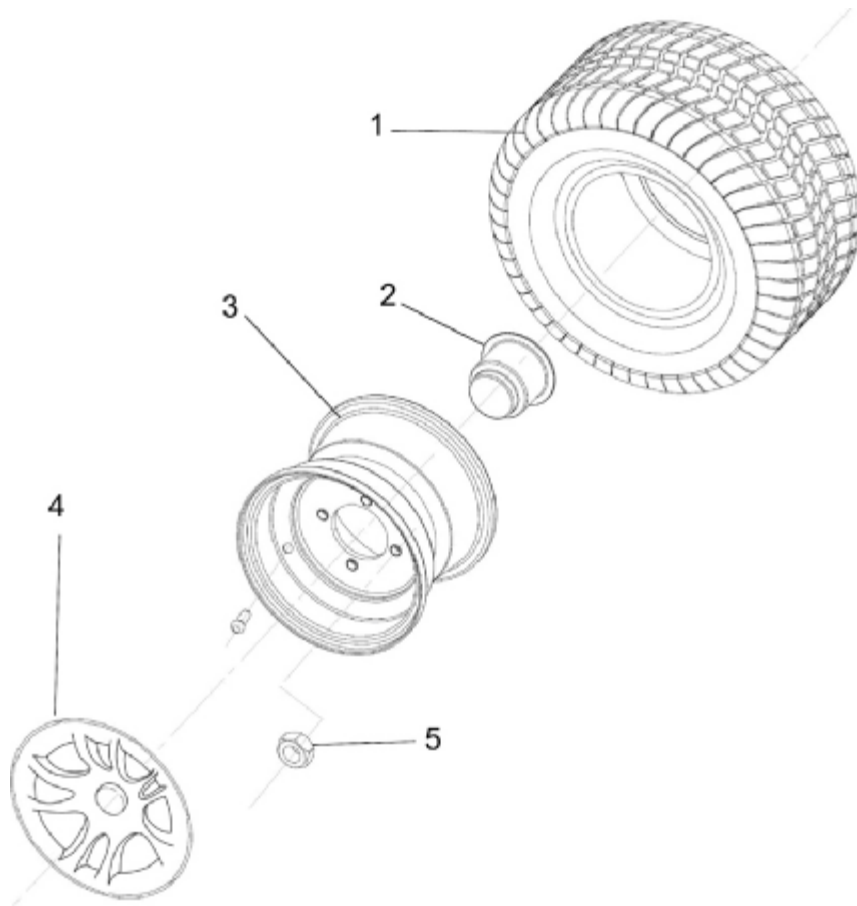
6-4 Differential Assembly (差速器总成)



6-4 Differential Assembly (差速器总成)

Item	New Part No.	Description	名称	Qty/car	Remark
1	DP-146	Differential housing	差速器壳	1	
2	DP-147	Spheroidal thrust washer	球型止推垫圈	1	
3	DP-148	Planetary gear	行星齿轮	2	
4	DP-149	Axle shaft gear	半轴齿轮	2	
5	DP-150	Planetary gear shaft	行星齿轮轴	1	
6	DP-151	Adjusting gasket	调整垫片	2	
7	DP-152	Large gear	大齿轮	1	
8	DP-153	Bearing 6008	轴承 6008	2	
9	DP-154	Pin 5×45	销 5×45	1	
10	DP-155	Washer	垫圈	2	
11	DP-156	Driving bevel gear screw	驱动锥齿轮螺钉	8	
12	2403200-008	Differential Assembly(include item 1-11)	差速器总称(包括 1-11)	1	

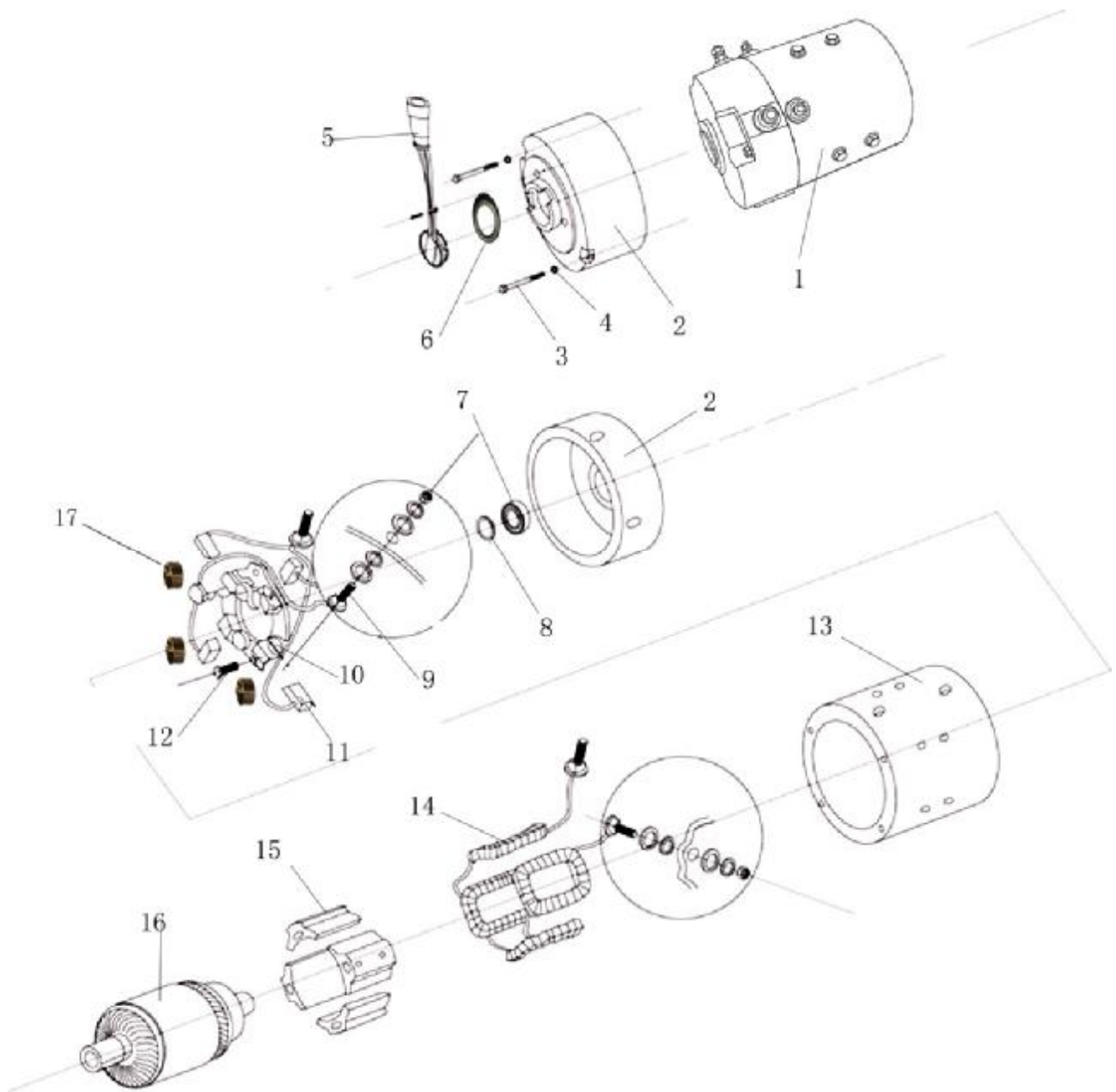
7-1 Wheel and Tyre (车轮)



7-1 Wheel and Tyre (车轮)

Item	New Part No.	Description	名称	Qty/car	Remark
1	2602100-009	Tire	轮胎总成	4	
2	2601100-014	Rim	轮辋	4	
3	2600011-011	Tyre bolt M12×45	轮胎螺栓	16	带在后桥上
4	2600012-013	Wheel nut	轮胎螺母	16	
5	2601210-004	Tyre valve	气门嘴	4	

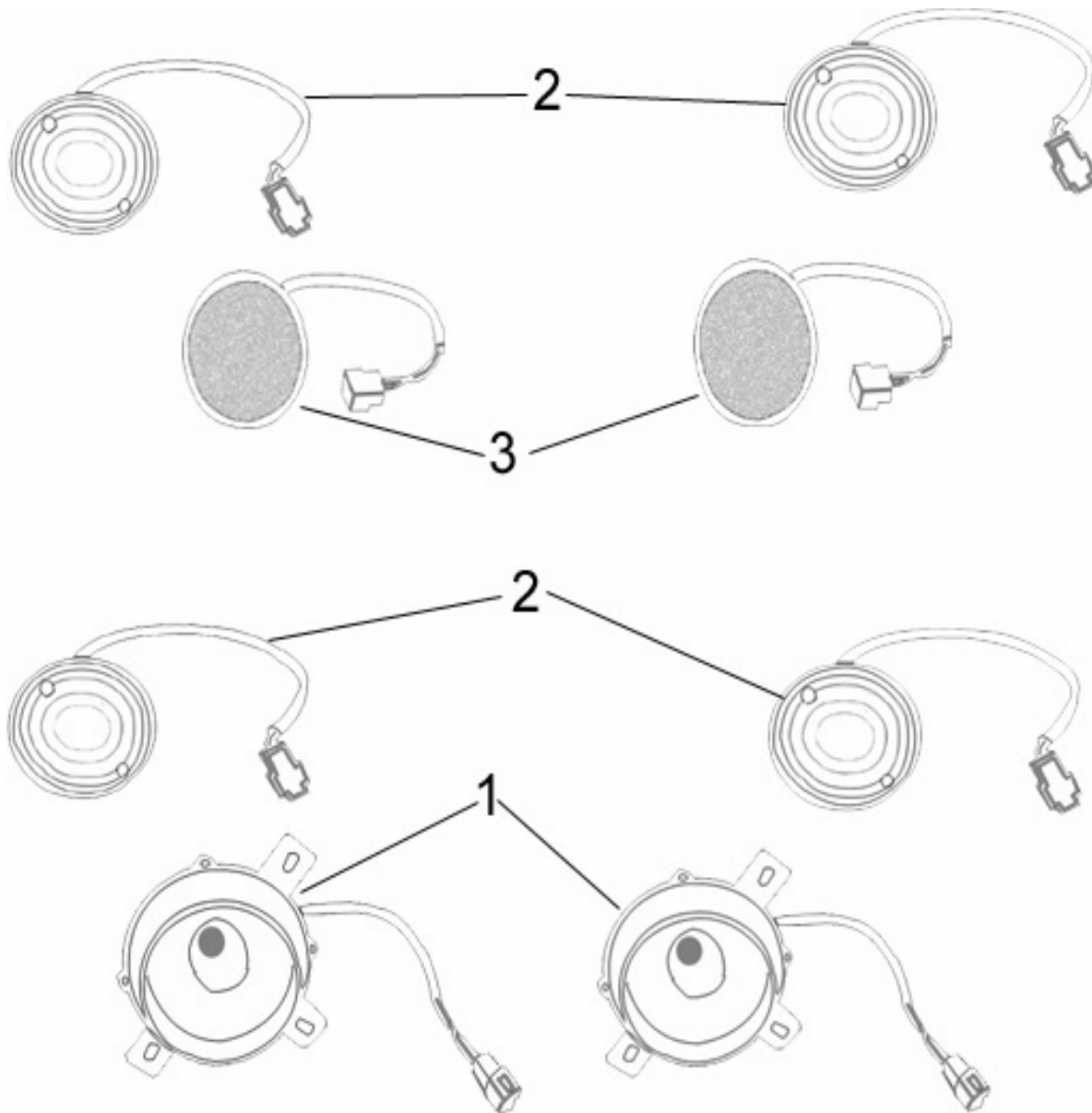
8-1 Motor Assembly (电机总成)



8-1 Motor Assembly (电机总成)

Item	New Part No.	Description	名称	Qty/car	Remark
1	XQ-3.8	Motor assembly (Sepex)	电机总成(常银), 他励	1	EG6042K01,EG6062K01
	XQ-3.8-4	Motor assembly (Series)	电机总成(常银), 串励	1	EG6042K,EG6062K
2	MT-002	Commutator end of cover	外壳换向器末端	1	
3	MT-003	Bolt	螺栓	2	
4	MT-004	Gasket spring	弹垫	2	
5	3202020-005	Speed sensor for Chinese motor	速度传感器(常 银)	1	
6	10PMS08-01	magnet coil	磁环	1	
7	MT-007	Bearing	轴承	1	
8	MT-008	Gland ring	压紧环	1	
9	MT-009	Armature binding post	电枢接线柱	2	
10	XQ-3.8/040	Brush shelf	刷架	4	
11	XQ-3.8/020	Carbon brush for Chinese motor	碳刷(国产电机)	4	
12	MT-012	Bolt	螺栓	4	
13	MT-013	Motor case	电机壳体	1	
14	MT-014	Field coil kit	励磁线圈	4	
15	MT-015	Pole core	磁极铁心	4	
16	MT-016	Armature	电枢	1	
17	XQ-3.8/030	Brush spring	压簧	1	

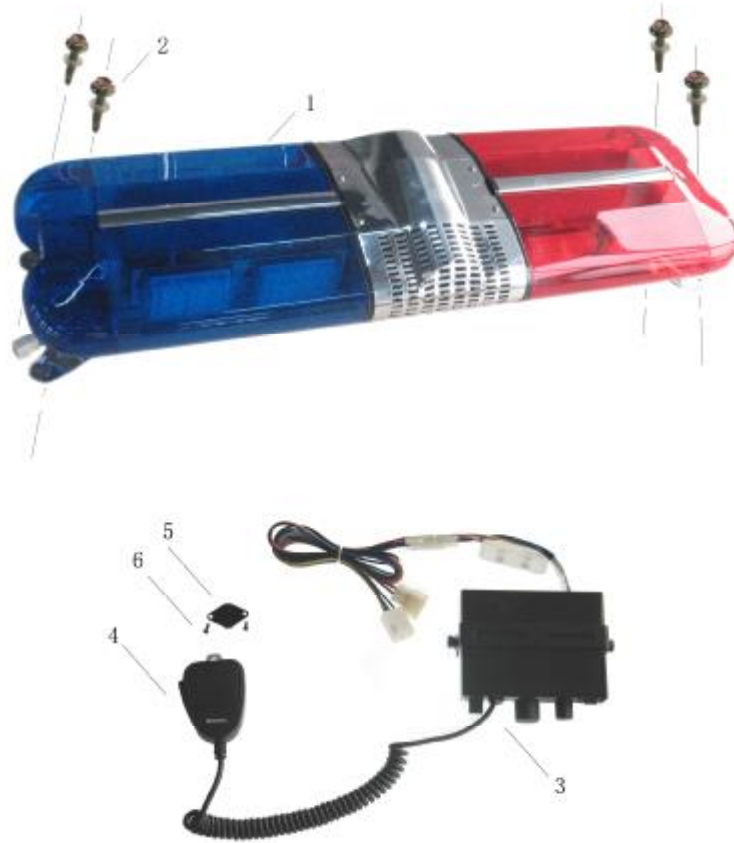
9-1 Turn Signal light, Headlight (前转向灯、前大灯)



9-1 Turn Signal light, Headlight (前转向灯、前大灯)

Item	New Part No.	Description	名称	Qty/car	Remark
1	3101100-004	Headlight	前照灯	2	
2	3109100-004	Turn signal	转向灯	4	
3	3106100-003	Brake light	后制动灯	2	

9-2 Alarm Lamp, Electric Siren (警灯总成, 警报器)



9-2 Alarm Lamp, Electric Siren (警灯总成, 警报器)

Item	New Part No.	Description	名称	Qty/car	Remark
1	3124100-002	Alarm Lamp	警灯总成	1	
2	Q270	Self-tapping screw	六角法兰面自攻螺钉	4	
3	3210100-003	Electric siren	警报器	1	
4		Electric siren microphone	警报器话筒	1	
5		hook	挂钩	1	
6	Q271	Self-tapping screw	十字槽盘头自攻螺钉——C型	2	

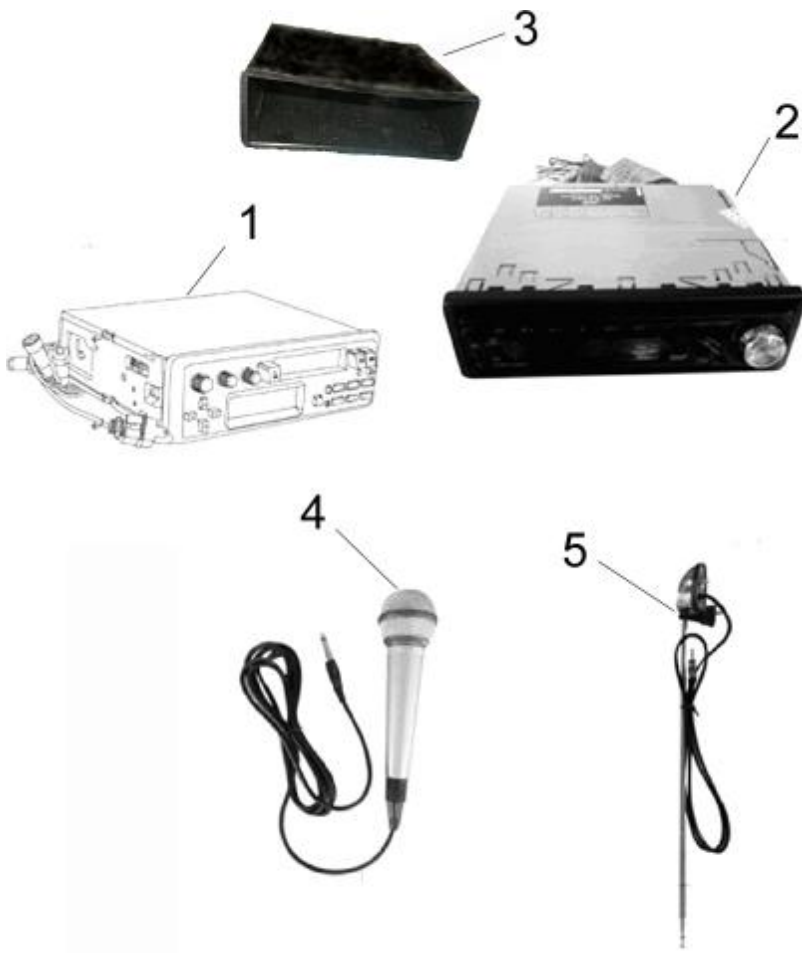
9-3 Meter, Start key (仪表, 开关)



9-3 Meter, Start key (仪表, 开关)

Item	New Part No.	Description	名称	Qty/car	Remark
1	3212100-052	Digital meter(Metric, 12.49:1 gear ratio)	数字组合仪表 (公制, 低速比后桥)	1	
	3212100-053	Digital meter(Metric, 10.25:1 gear ratio)	数字组合仪表 (公制, 高速比后桥)	1	
	3212100-054	Digital meter(British, 12.49:1 gear ratio)	数字组合仪表 (英制, 低速比后桥)	1	
	3212100-055	Digital meter(British, 10.25:1 gear ratio)	数字组合仪表 (英制, 高速比后桥)	1	
2	3032010-002	Emergency switch	危急开关	1	
3	3032010-001	Forwards/Reverse switch	进退开关	1	
4	3001010-002	Start key	点火锁	1	
5	3032020-001	Tow/Run Switch	拖动/运行开关	1	

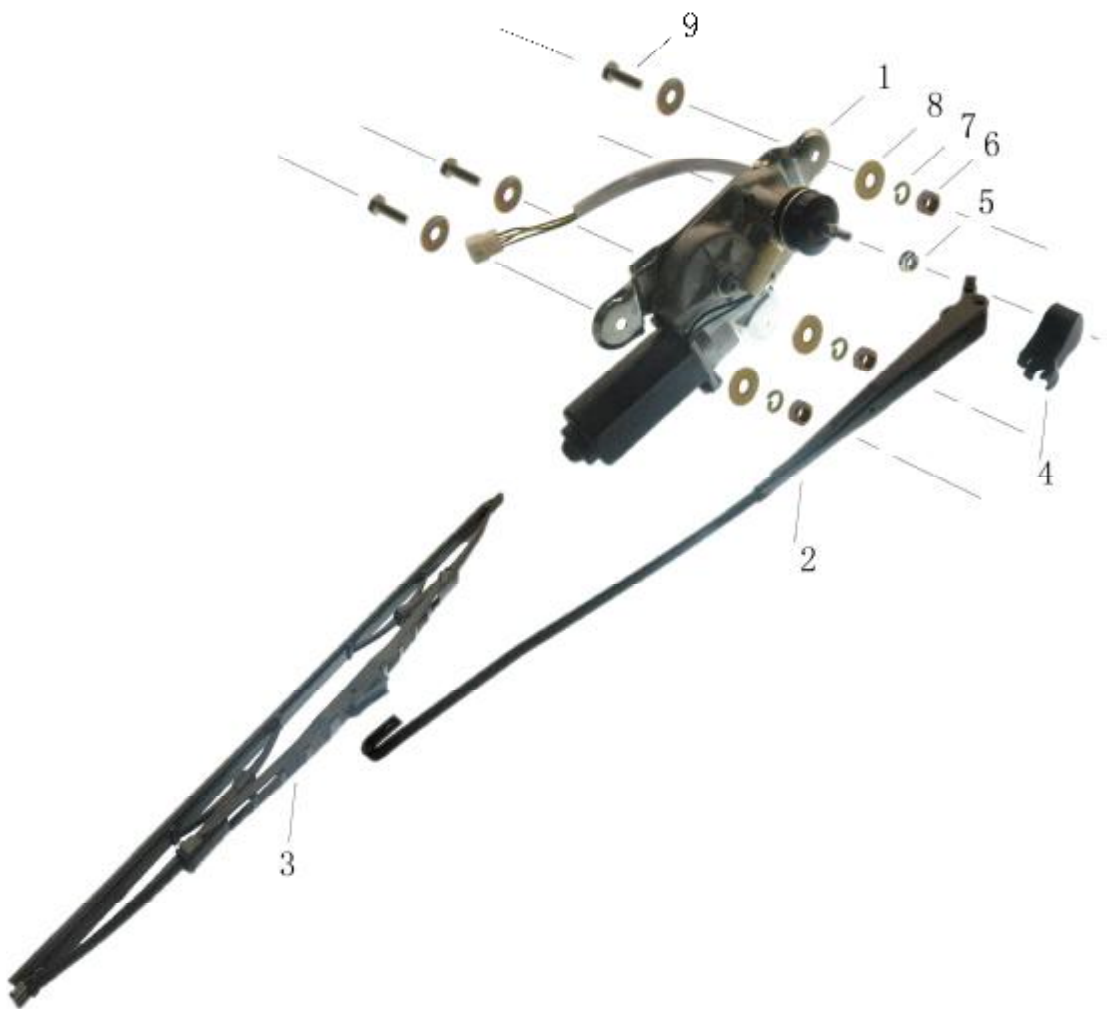
9-4 Radio and CD Player (收放机和 CD 播放器)



9-4 Radio and CD Player (收放机和 CD 播放器)

Item	New Part No.	Description	名称	Qty/car	Remark
1	SCA-988A	Radio	收放机	1	
2	8501200-002	CD player assembly	CD 机	1	
3	8501110-002	Dustproof cover	收放机防尘罩	1	
4	3037100-001	Wired microphone	有线话筒	1	
5	8503010-001	antenna	天线	1	

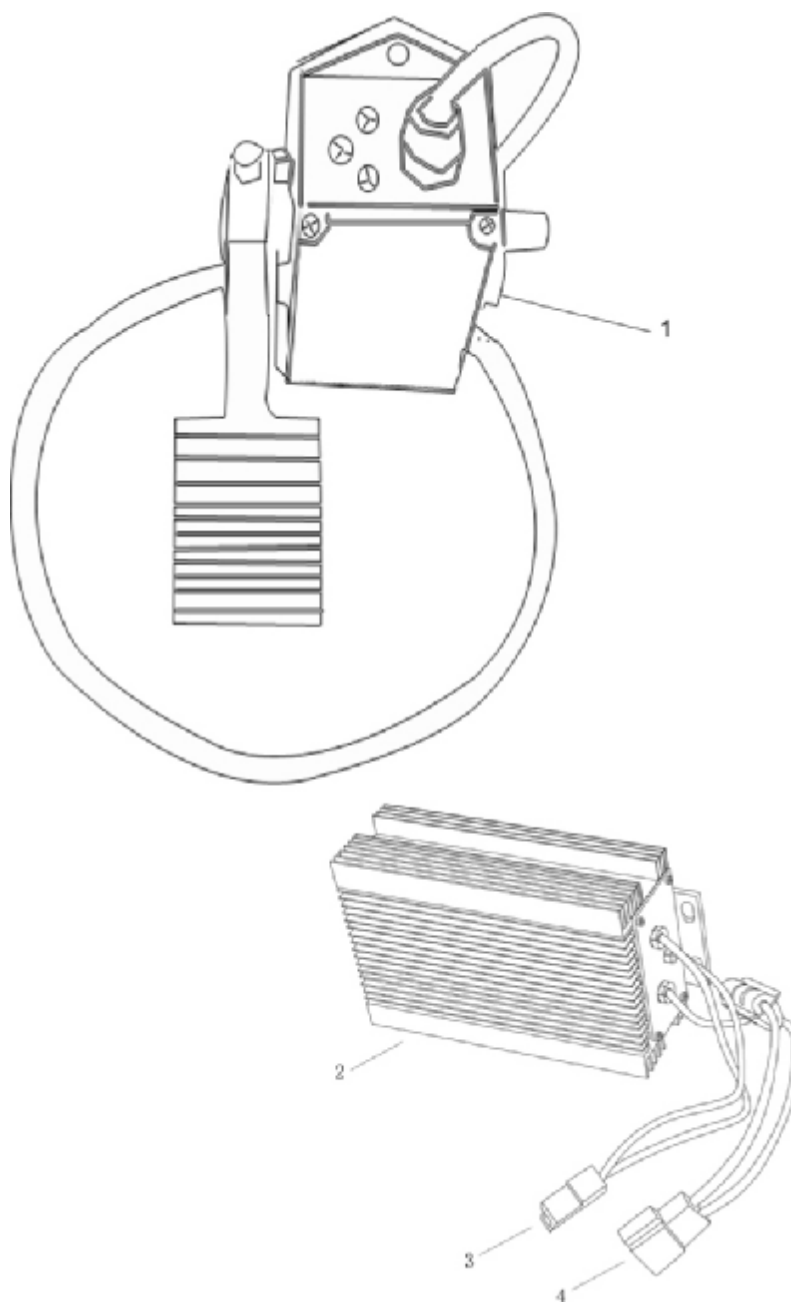
9-5 Windshield Wiper Assembly (雨刮总成)



9-5 Windshield Wiper Assembly (雨刮总成)

Item	New Part No.	Description	名称	Qty/car	Remark
1	3006100-007	Windshield wiper motor assembly	雨刮电机总成	1	
2	6042-3016020	Windshield wiper arm	刮臂	1	
3	6042-3016030	Wiper brush	刮片	1	
4		Shield	护罩	1	
5		Nut	螺母	1	
6		Nut	螺母	3	
7		Gasket spring	弹垫	3	
8		Gasket	平垫	3	
9		Bolt	螺栓	3	
10	6041-3016000	Wiper Assembly (Include 1-9)	雨刮总成	1	

9-6 Accelerator Assembly, DC Converter (加速器总成, DC 转换器)



9-6 Accelerator Assembly, DC Converter (加速器总成, DC 转换器)

Item	New Part No.	Description	名称	Qty/car	Remark
1	1007100-005	Accelerator Assembly (including pedal)	加速器总成(含踏板)	1	
2	3048100-004	DC converter	DC 转换器 300W	1	
4		To 48V out	接 48V 输入	1	
3		To 12V in	接 12V 输出	1	

9-7 Other Electric Equipments (其他电器设备)

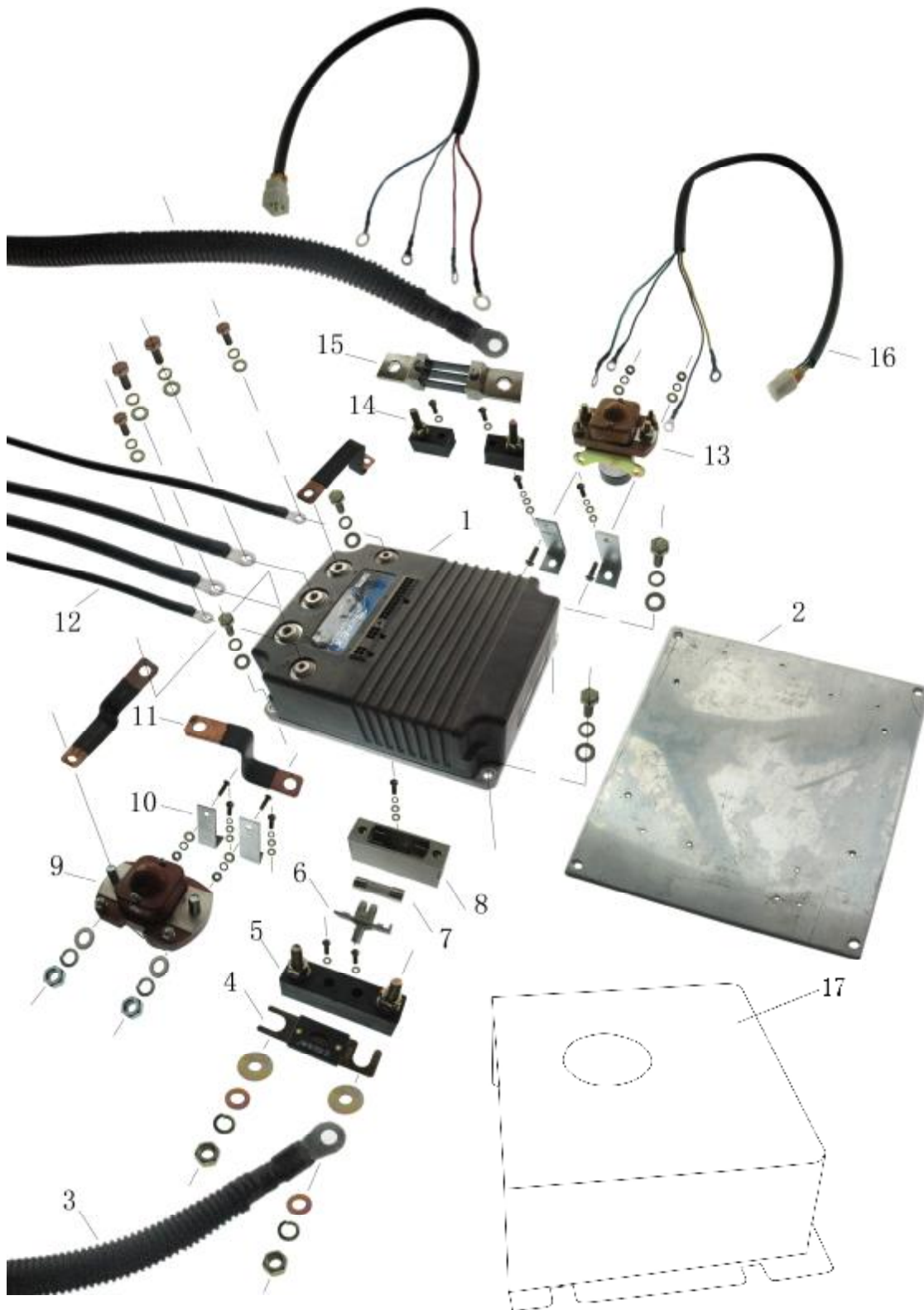


9-7 Other Electric Equipments (其他电器设备)

Item	New Part No.	Description	名称	Qty/car	Remark
1	8510010-004	loud speaker	扬声器	2	
2	3024100-002	Combination switch	组合开关	1	
3	3211010-001	Backup buzzer	倒车蜂鸣器	1	
4	3004010-001	Electric horn	电喇叭	1	
5		Fuse box	保险盒	1	
6	8503010-001	Antenna	天线	1	1.7m
7	3129010-002	Electronic flasher	电子闪光器 12V	1	
8	8510011-004	Waterproof cover	扬声器防水罩	2	

9-8 Electronic Controller Assembly (电控总成)

Electric Controller 1268 Assembly (1268 电控总成)

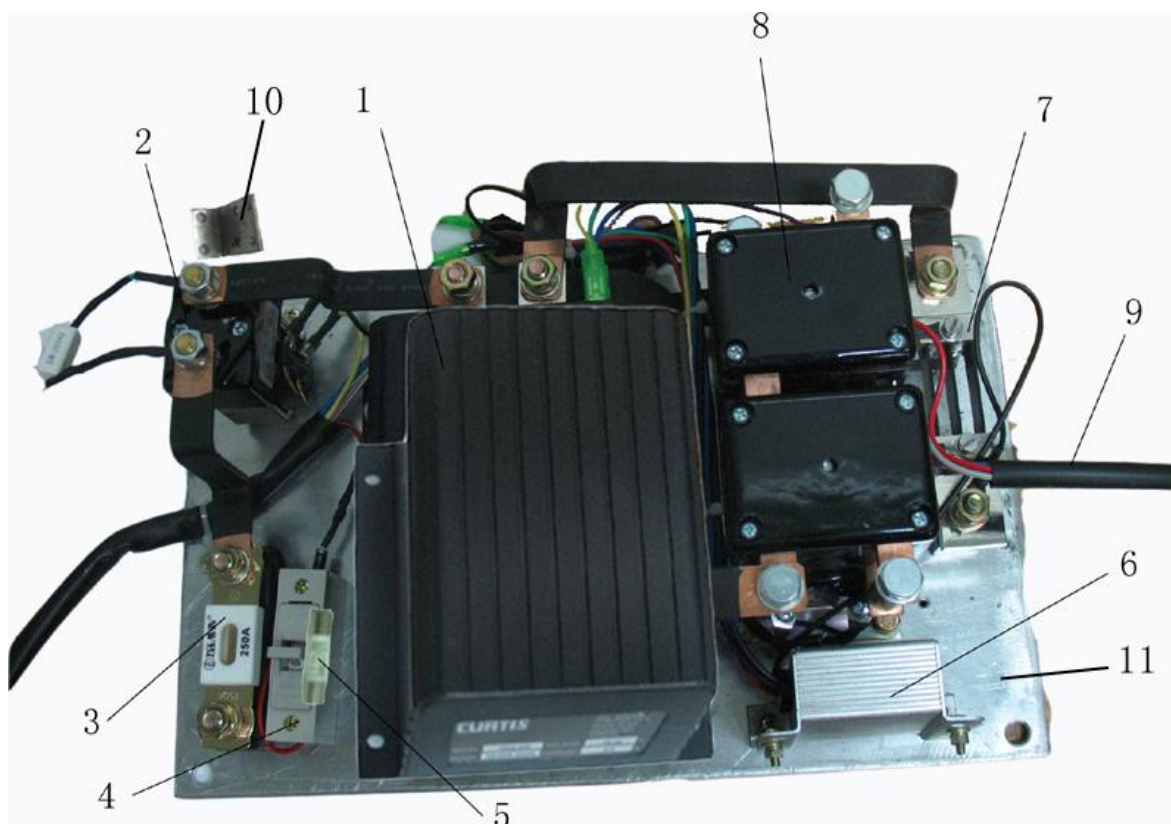


9-8 Electronic Controller Assembly (电控总成)

Electric Controller 1268 Assembly (1268 电控总成)

Item	New Part No.	Description	名称	Qty/car	Remark
1	1005100-007	Controller 1268	控制器 1268	1	
2	6042-1005011B	Heat diffusion plate	散热板	1	Aluminum
3	3313020-004	Connect wire 35 ² ×2700mm	电源线 A	2	one red and one black
4	F26-ANL-425A	Main fuse	主熔断器	1	425A
5		Main fuse socket	主熔断器支座	1	
6		Fuse buckle	保险管卡扣	1	
7	F26-R005-20A-01	Fuse 20A	附件熔断器	1	10*38/20A
8	1005420-001	20A Fuse socket	附件熔断器座	1	(10*30)
9	MZJ-200A/004	Main contactor	主接触器	1	
10		Main contactor bracket	主接触器支架	1	
11		Copper bar	铜条	3	
12	3313020-002	Connect wire 35 ² ×800mm	导线 35 ² ×800mm	4	
13					
14		Shunt socket	分流器支座	2	
15	1005310-002	Shunt	分流器	1	300A / 75mV
16	3302000-048	Controller wire	控制器线束	1	
17	5108011-022	Dustproof cover	电控防尘(水) 罩	1	

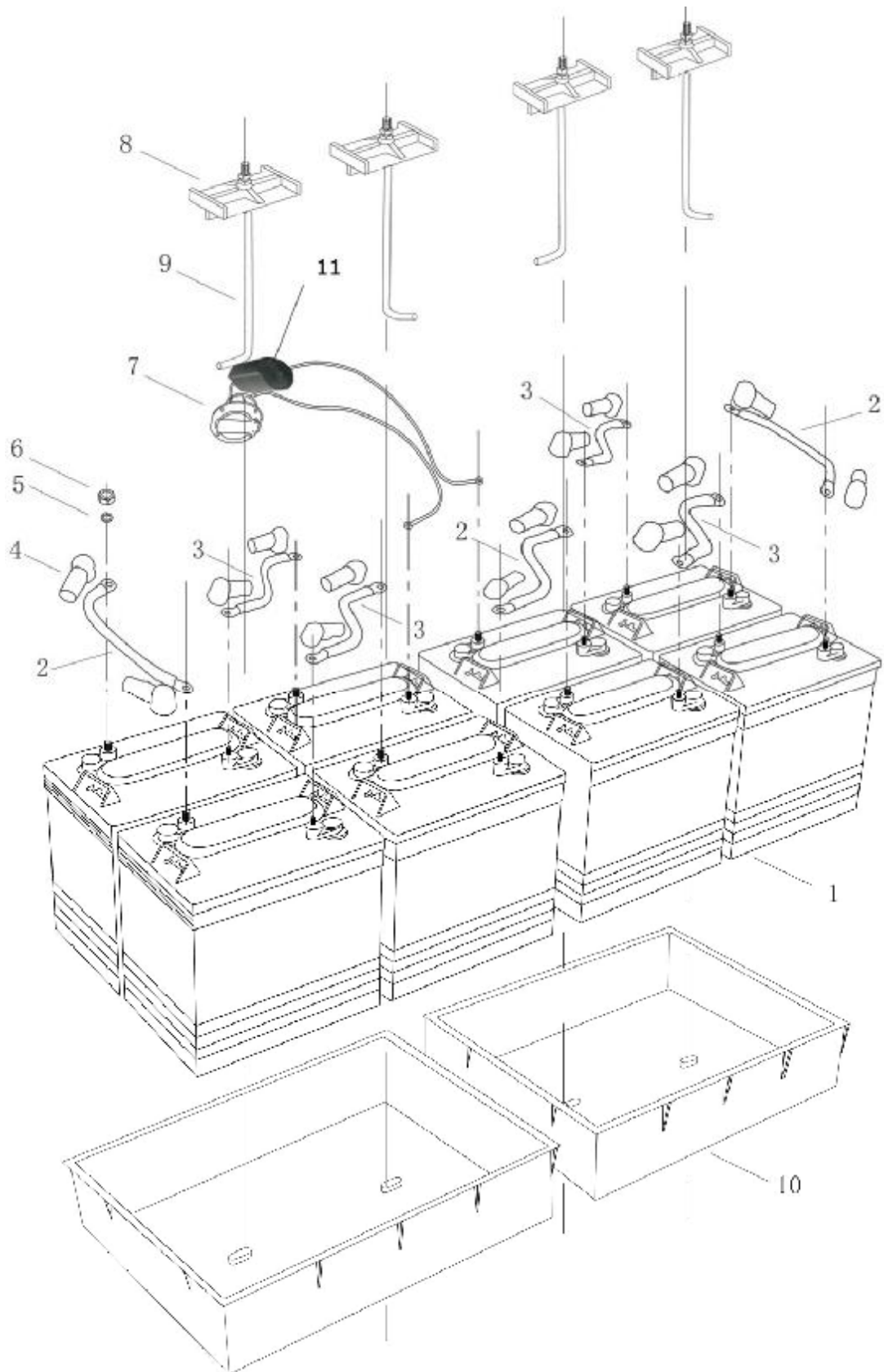
Electric Controller 1204 (1204 控制器)



Electric Controller 1204 (1204 控制器)

Item	New Part No.	Description	名称	Qty/car	Remark
1	1005100-014	Controller 1204	控制器 1204	1	
2	1005200-004	Solenoid	主接触器	1	
3	1005510-004	Main fuse 250A	主保险 250A	1	
4	1005420-001	Accessory fuse holder	附件保险座	1	
5	1005410-001	Accessory fuse 10A	附件保险 10A	1	
6	TC611A-48V	Charger protector	电器保护器	1	
7	1005310-002	Shunt	分流器	1	
8	1005030-002	Contactor for direction	换向接触器	1	
9	3302000-047	Controller wire harness	控制线束	1	
10		Solenoid bracket	主接触器支架	1	
11	1005021-018	Heat diffusion plate	散热铝板	1	

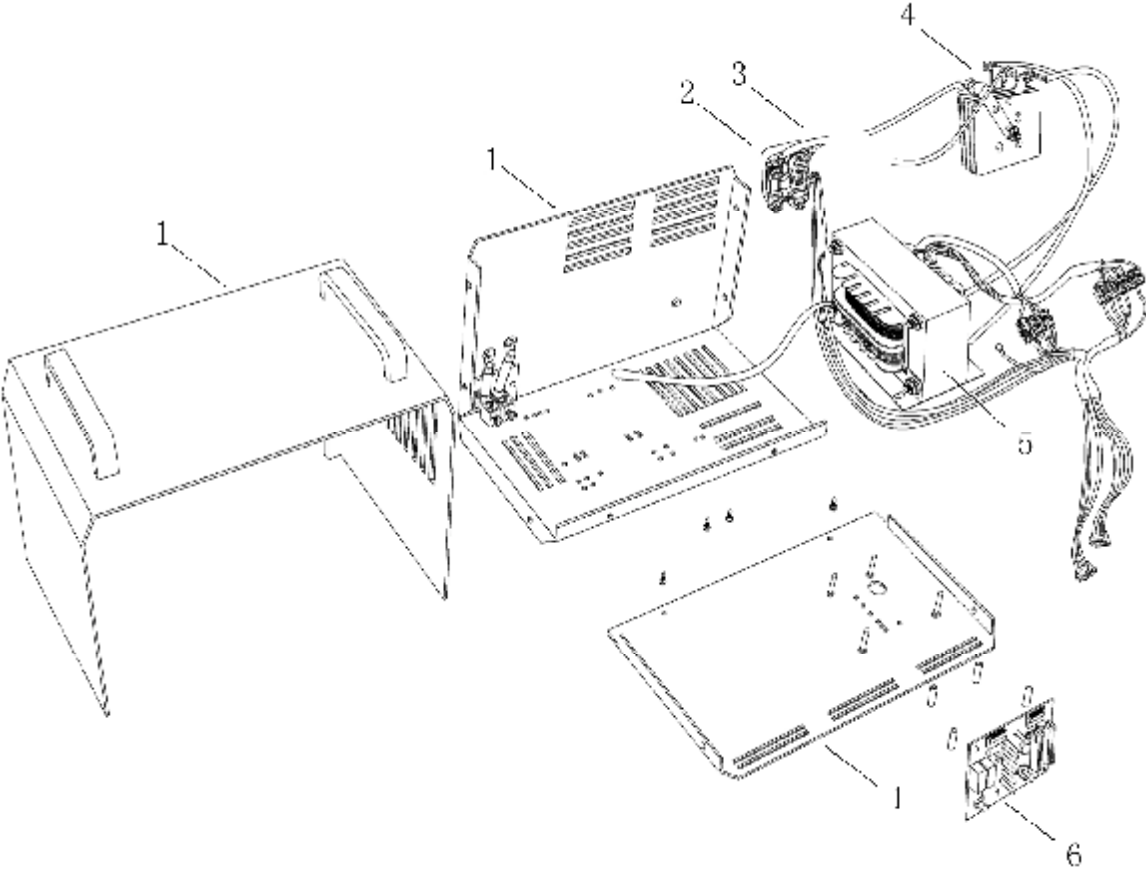
9-9 Batteries and Connect Wire (电池及连线)



9-9 Batteries and Connect Wire (电池及连线)

Item	New Part No.	Description	名称	Qty/car	Remark
1	1101100-002	Battery105	蓄电池 105	8	
2	6082-3018006	Connect wire	电池连接线	3	352×230mm
3	6082-3018005	Connect wire	电池连接线	4	352×200mm
4		Binding post jacket	接线柱护套	12	
5		Gasket spring M8	弹垫 M8	16	
6	FB01009	British system nut 5/16-8	英制螺母 5/16-8	16	
7	2025-3022015	Charger harness assembly	充电插座总成	1	
8	1101012-001	Battery impact block	蓄电池压块	4	
9	1101011-002	Battery dead lever	蓄电池固定杆	2	
10	6082-5102072-001	Battery box	电池盒	2	

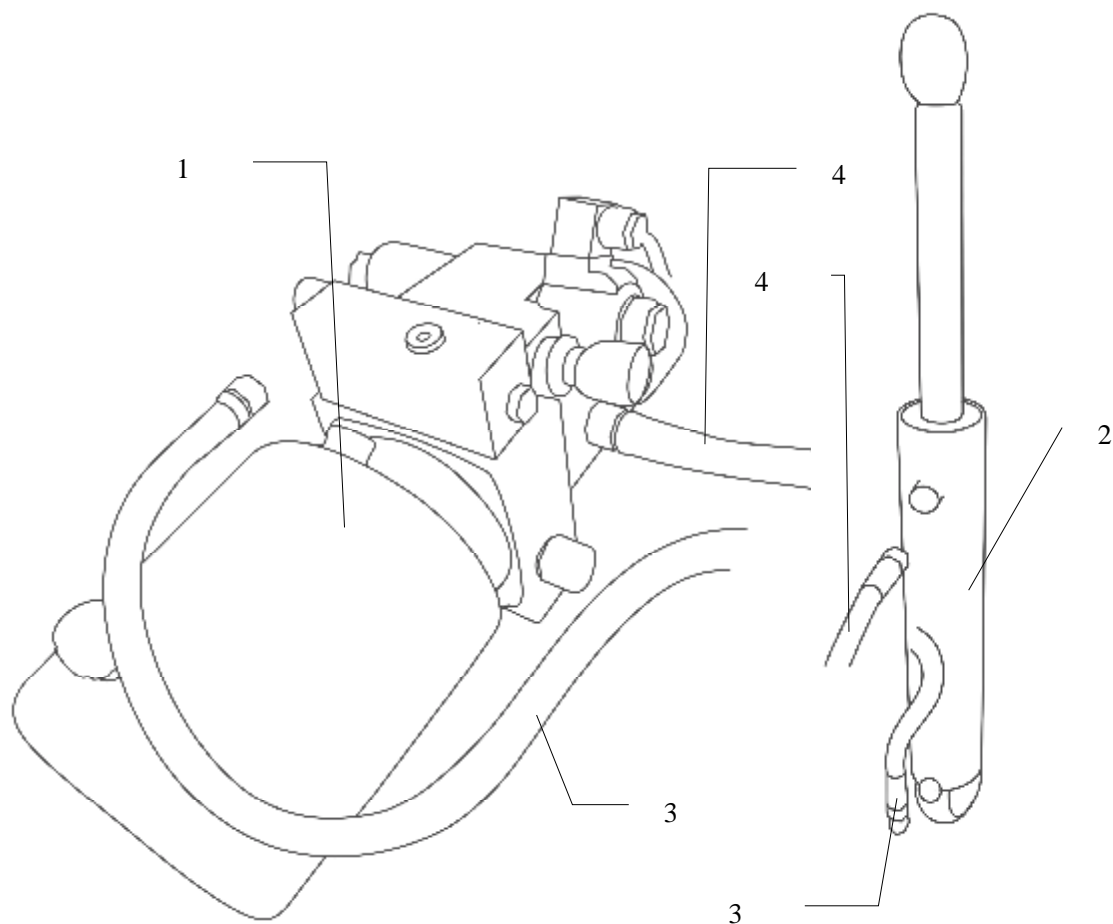
9-10 Charger (充电器)



9-10 Charger (充电器)

Item	New Part No.	Description	名称	Qty/car	Remark
1	603172	Charger case	充电器箱体	1	
2	70423	Shunt	采样电阻	1	
3	3606	Output fuse	输出保险	1	
4	7458	Rectifier	整流器	1	
5	663511	Transformer	变压器	1	
6	1103150-003	Circuit board	电路板	1	
7	ST48V/25A-230V-A	Charger Assembly 230V	充电机总成 230	1	
	1103100-005	Charger Assembly 110V	充电机总成 110	1	

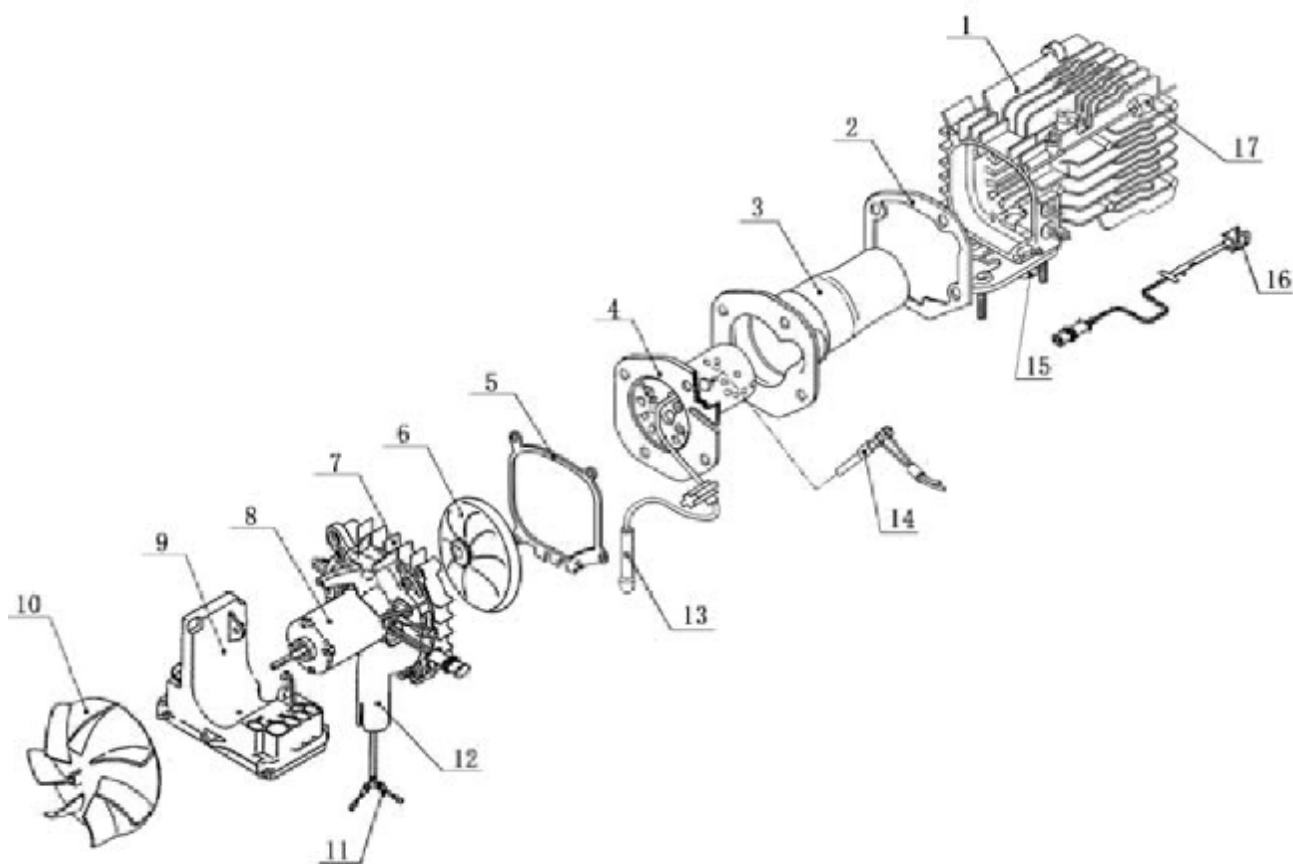
10-1 Hydraulic lift (液压举升)



1-1 Hydraulic lift (液压举升)

Item	Part number	Description	名称	Qty/car	Remark
1	5020-9015400	Hydraulic system	液压系统	1	
2		Hydraulic rod	液压杆	1	
3	5020-9015410	Hydraulic system inlet pipe	液压系统进油管	1	
4	5020-9015420	Hydraulic system return pipe	液压系统回油管	1	

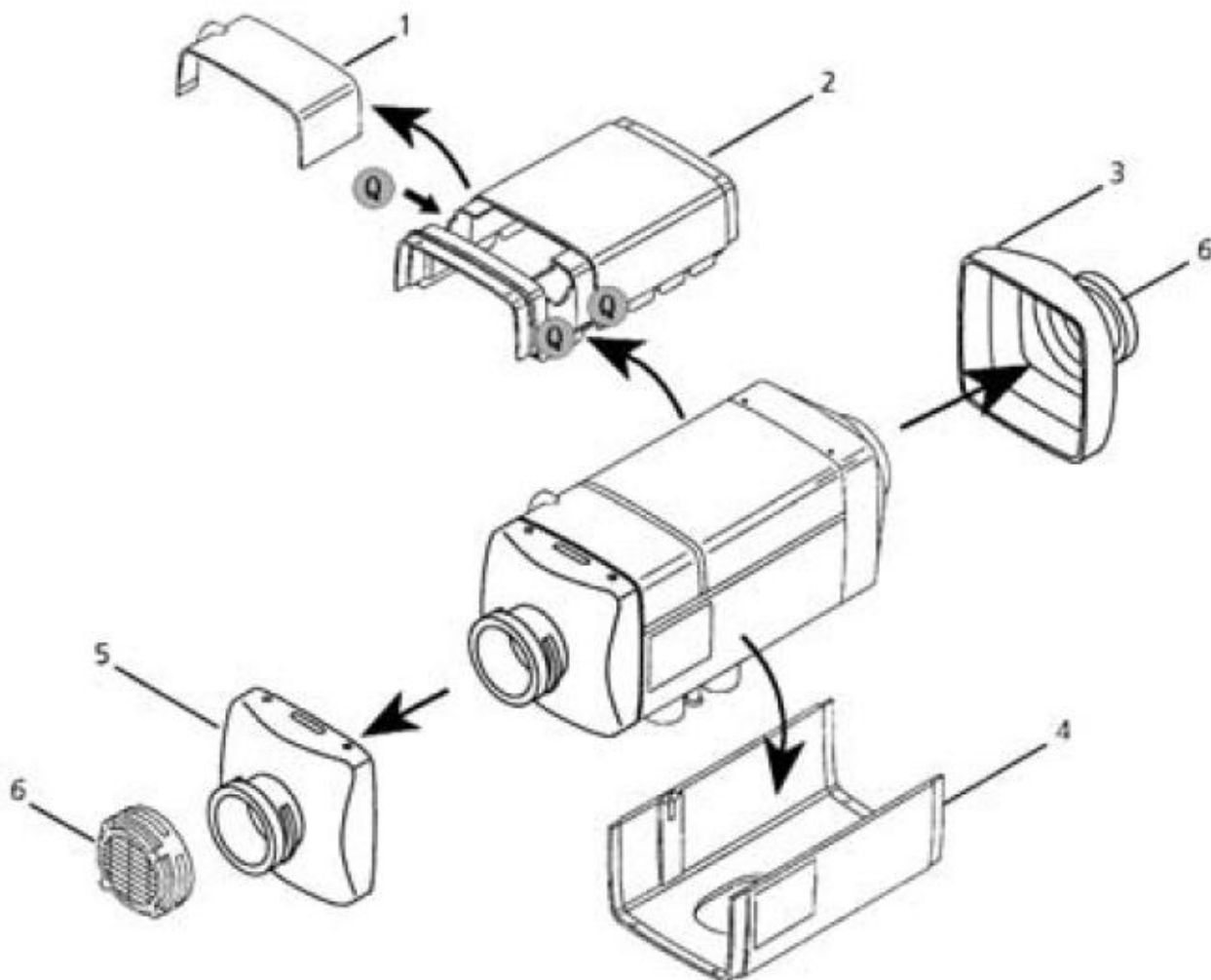
11-1 Heater component (暖风机机体)



11-1 Heater component (暖风机机体)

Item	Part number	Description	名称	Qty/car	Remark
1		Heat exchanger	热交换器	1	
2		Gasket	密封垫	1	
3		Combustion tube	燃烧管	1	
4		Burner	燃烧器	1	
5		Gasket	密封垫	1	
6		Combustion fan wheel	助燃风扇轮	1	
7		Fan motor bracket	风扇电机支架	1	
8		Fan motor	风扇电机	1	
9		Controller	控制器	1	
10		Heating fan wheel	供热风扇轮	1	
11		Oil pump lead	油泵引线	1	
12		Combustion air inlet	助燃进气口	1	
13		Inlet pipe	进油管	1	
14		Glow plugs	电热塞	1	
15		Exhaust pipe	排气管口	1	
16		Overheating sensor	过热传感器	1	
17		Insulation pad	隔热垫	1	

11-2 Heater shell (暖风机罩形外壳)



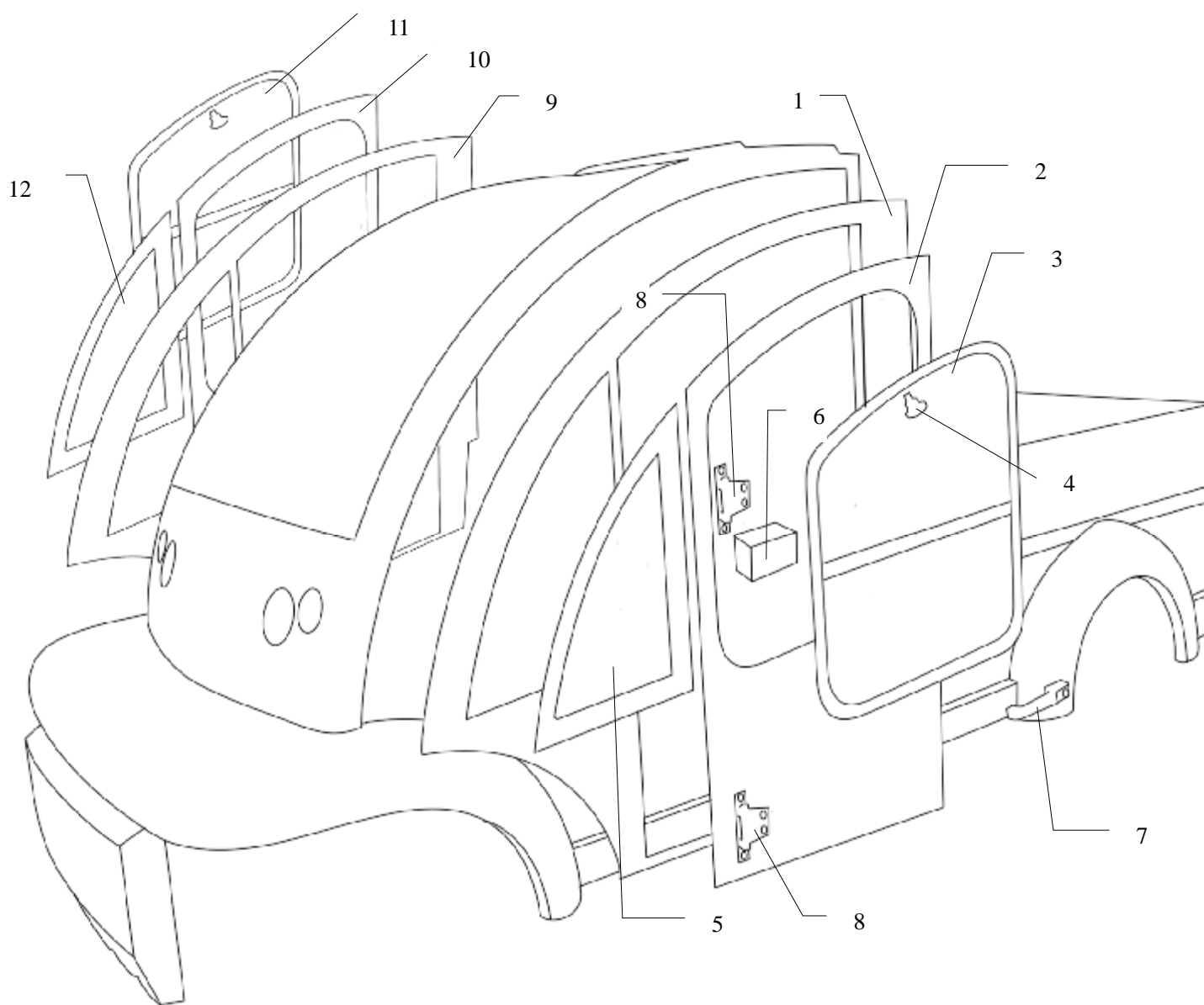
11-2 Heater shell (暖风机罩形外壳)

Item	Part No	Description	零配件名称	Qty/Car	Remark
1		Wires box cover	接线盒盖	1	
2		Upper housing	上罩壳	1	
3		Heat outlet	供热出气口	1	
4		Down housing	下罩壳	1	
5		Heat inlet	供热进气口	1	
6		Outlet & inlet mask	进出气口罩	1	

11-3 Heater installation (暖风机安装)

Item	Part No	Description	零配件名称	Qty/Car	Remark
1		Host computer	主机	1	
2		Main harness	主线束	1	
3		Fuseholder	保险丝座	1	
4		Self-tapping screws 4 * 16	自攻螺钉 4*16	1	
5		Fuse box cover	保险盒盖	1	
6		Blade fuse	插片式熔断器	1	
7		Control switch	控制开关		
8		Control switch connector	控制开关连接器	1	
9		Fault diagnosis connector	故障诊断连接器	1	
10		Suction pipe	吸油管	1	
11		Reducing Tee	异径三通	1	
12		Tubing clamp	油管卡子	12	
13		Tubing connector	油管接头	5	
14		Pipeline	输油管	2	
15		Pipe filter	滤油器	1	
16		Oil pump	油泵	1	
17		Pump connector	油泵连接器	1	
18		Oil pump lead	油泵引线	1	
19		Pump clamp Φ8/10	油泵卡子Φ8/10	1	
20		M6 nut	M6 螺母	4	
21		Tubing clamp Φ12/14	油管卡子Φ12/14	2	
22		self-tapping screw 5.5 * 30	自钻自攻螺钉 5.5*30	1	
23		Intake pipe clamp	进气管卡子	1	
24		Intake pipe	进气管	1	
25		Intake pipe guard	进气管管口护罩	1	
26		self-tapping screw 5.5 * 20	自钻自攻螺钉 5.5*20	2	
27		Intake pipe retaining clip	进气管固定卡子	1	
28		Spacer	垫圈	4	
29		Seals pad	密封垫	1	
30		Exhaust pipe clamp	排气管卡子	1	
31		Exhaust pipe	排气管	1	
32		Exhaust pipe retaining clip	排气管固定卡子	1	
33		Exhaust pipe guard	排气管管口护罩	1	
34		Self-tapping screw 3 * 30	自攻螺钉 3*30	4	

12-1 (封闭件 Hard door)



12-1 (封闭件 Hard door)

Item	Part number	Description	名称	Qty/car	Remark
1			左侧围骨架总成	1	
2	6043PT-6301100	Driver's door frame assembly	驾驶门骨架总成	1	
3	6043PT-5404020	Left 2nd push-pull side windows	左二推拉侧窗	1	
4	6043PT-6204111	windows buckle	车窗玻璃窗扣	2	
5	6043PT-5404010	Left front triangular side windows	左前三角侧窗	1	
6	6043P-6105012	Door Lock Box	门锁盒	2	
7	6043P-6105010	Door lock assembly	门锁总成	2	
8	6043KF-6106010	Door hinge	门铰链	4	
9		right side enclose assembly	右侧围骨架总成	1	
10	6043PT-6101200	front passenger door frame assembly	前乘客门骨架总成	1	
11	6043PT-5304020	Right push and pull side windows	右二推拉侧窗	1	
12	6043PT-5304010	Right front triangular side windows	右前三角侧窗	1	